

FLIGHT CONTROL GRIPS

Grips in this section are normally used by the pilot or co-pilot for flight control of fixed wing aircraft, cyclic and collective control of helicopters, and for simulators. Some may include devices used to control weapon systems of the aircraft. The more complex aircraft use the more complex grips containing a variety of switches in combination with other controls such as optical encoders, potentiometers, force transducers and electronics. A few collective grips utilize lighted face plates.

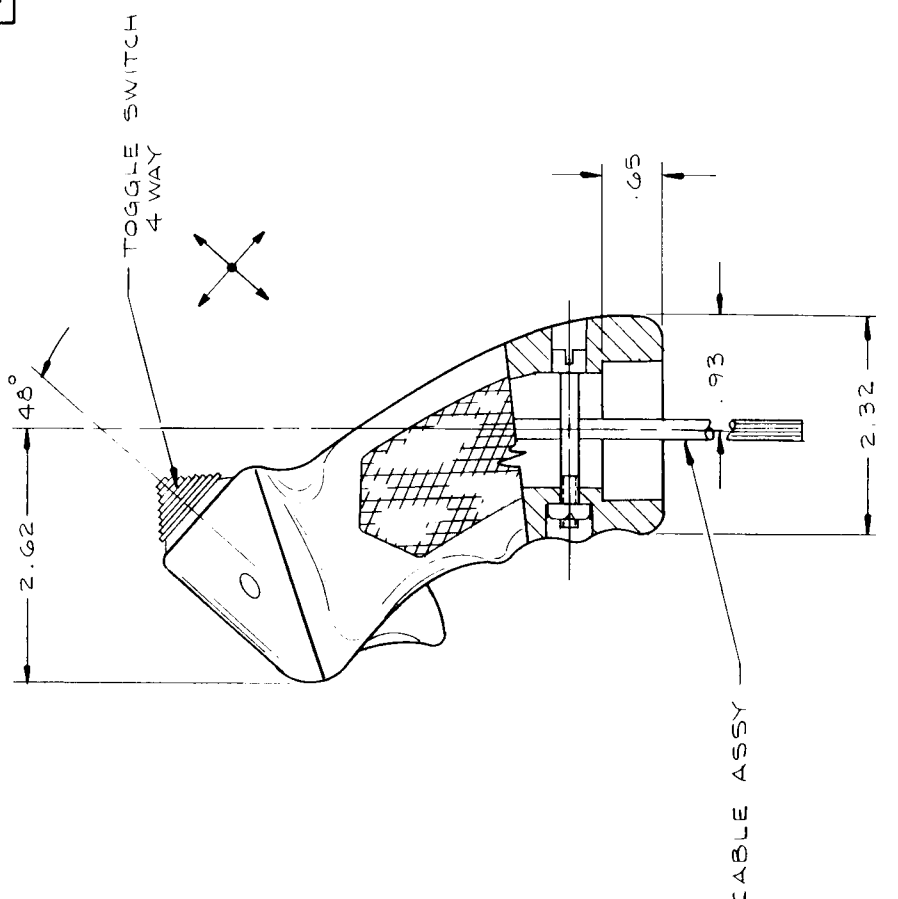
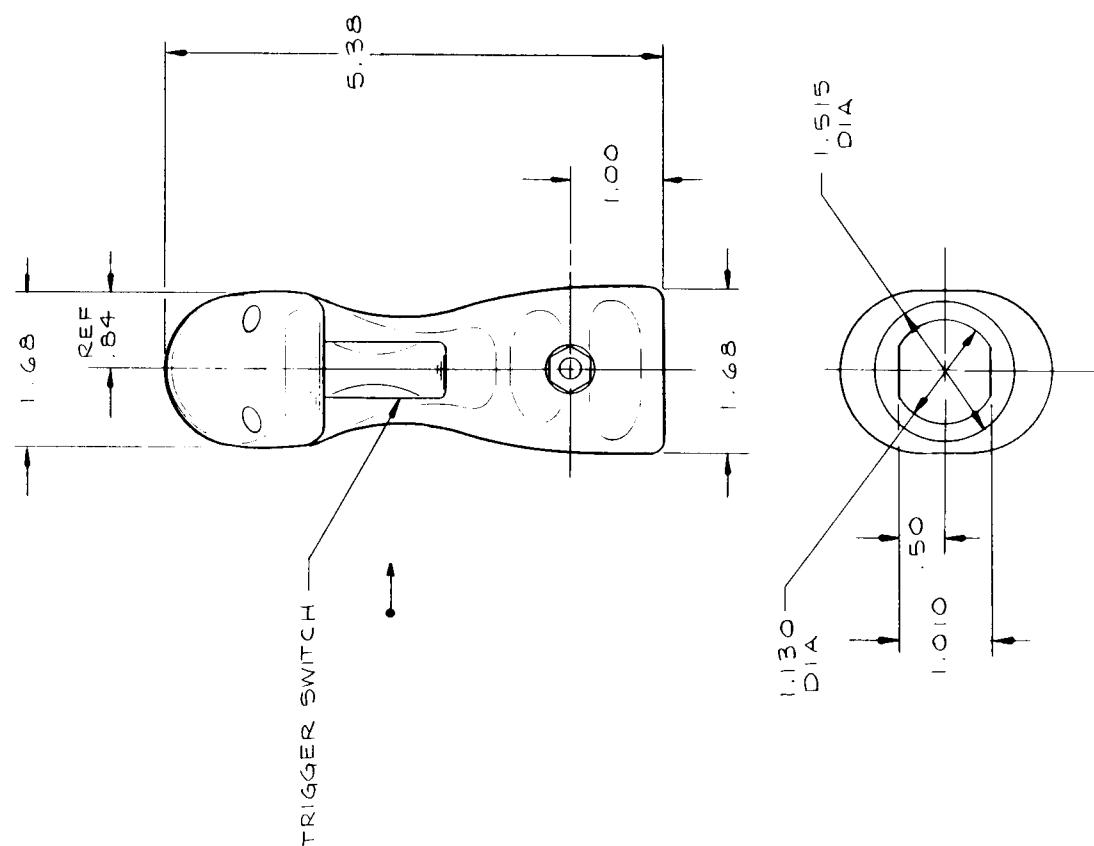
Grips are produced in investment cast aluminum or molded plastic, usually in flat black, although other colors are available.

These grips are mounted by an internal hole in the base, a tubular protrusion or a threaded coupling. Those using a threaded coupling that houses an electrical connector provide means for rapid attachment and removal of the grip. This is accomplished without having to remove, feed wires through, or otherwise disturb other equipment on the aircraft. Resultant improvements in Mean Time To Repair are dramatic. Most of these grips are adaptable for uses other than flight control.



REV STATUS OF SHEETS	
SH	REV
1	
2	
3	

REVISIONS		DATE	APPROVED
SYM	DESCRIPTION		



FIND NO	QTY	CODE	PART OR IDENTIFYING NUMBER	NOMENCLATURE OR DESCRIPTION	NOTE

UNLESS OTHERWISE SPECIFIED DIMENSIONS ARE IN INCHES	
DECIMALS	TOLERANCES
.XX ± .01	± .1"
.XXX ± .005	± .1"
HEAT TREAT	FINISH

SYMBOLS	PARTS LIST

PREPARED	CHECKED	APPROVED

SIZE	CODE	IDENT NO

SCALE	WT	SHEET

MATERIAL: MOLDED FIBER FILLED THERMOSETTING PLASTIC.

2. DIMENSIONS APPLY AFTER PLATING.

1. REMOVE ALL BURRS AND SHARP EDGES; SPRUE AND ALL FLASH; GATES, FINS AND RISERS.

NOTES, GENERAL, UNLESS OTHERWISE SPECIFIED AND AS APPLICABLE:

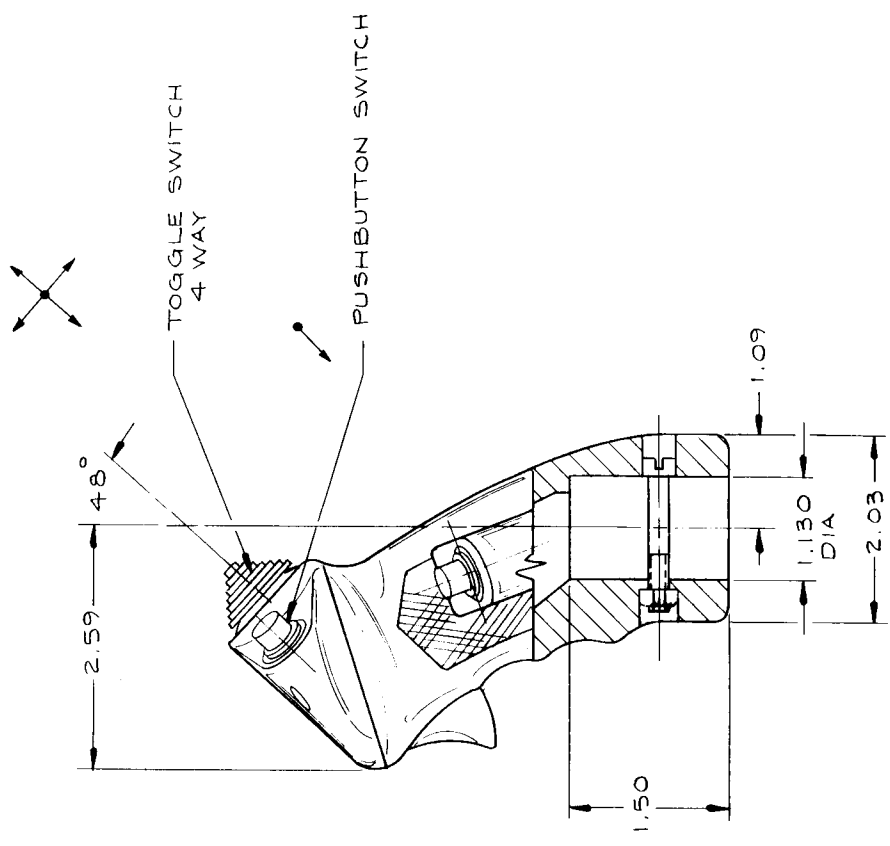
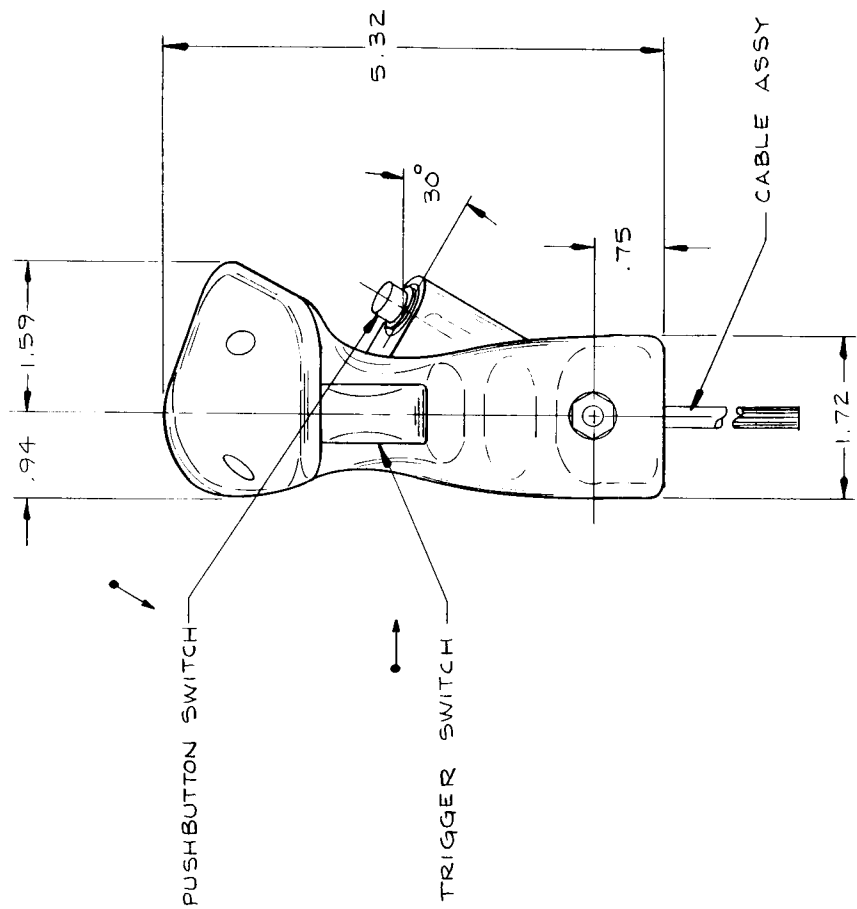
MASON ELECTRIC COMPANY, INC

GRIP ASSEMBLY CONTROL

SIZE CODE IDENT NO
C 81579

REV STATUS OF SHEETS	
SH	REV
1	
2	
3	

REVISIONS		DATE	APPROVED
SYM	DESCRIPTION		



FIND NO	QTY REQD	CODE IDENT NO	PART OR IDENTIFYING NUMBER	NOMENCLATURE OR DESCRIPTION	NOTE
MATERIALS OR PARTS LIST					
UNLESS OTHERWISE SPECIFIED DIMENSIONS ARE IN INCHES					
TOLERANCES					
DECIMALS					
ANGLES					
SURF FNISH					
.XX ± .01					
.XXX ± .005					
HEAT TREAT					
FINISH					
SYMBOLS					
□ FINISH LIST					
△ NOTES					
PREPARED					
CHECKED					
APPROVED					
SIZE CODE IDENT NO					
C 81579					
SCALE / WT					
SHEET					

MASON ELECTRIC COMPANY, INC

GRIP ASSEMBLY CONTROL

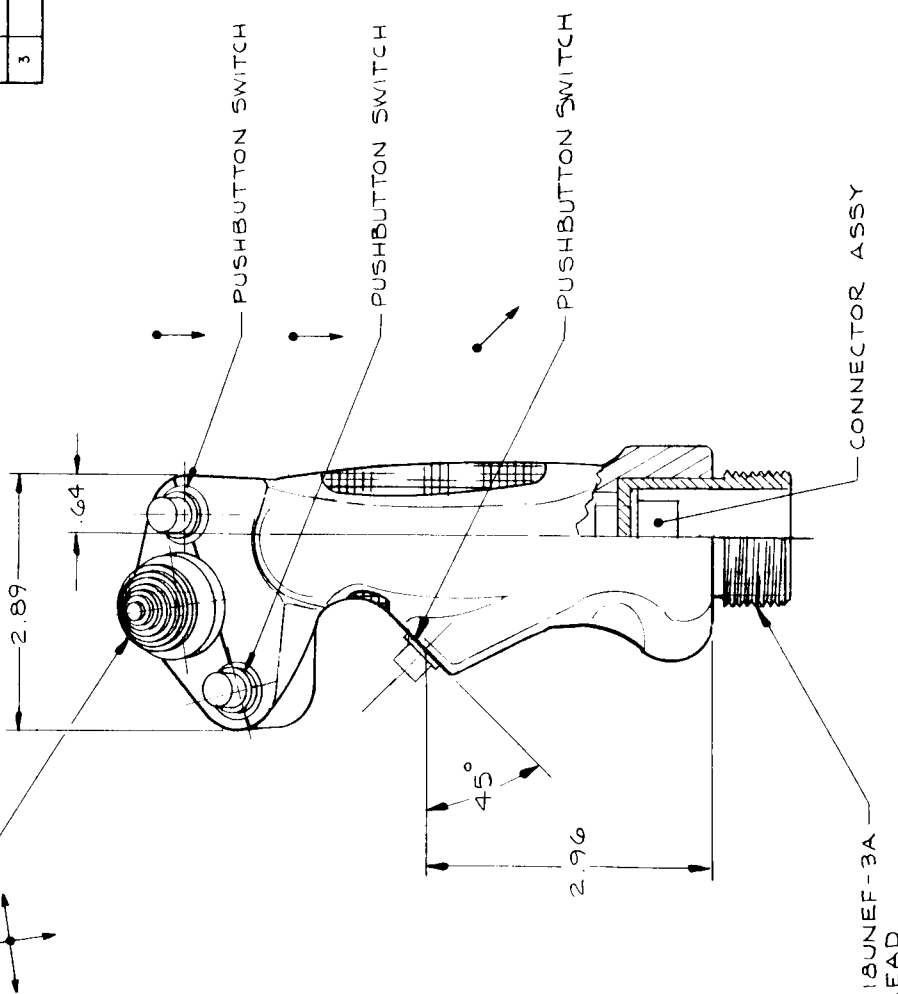
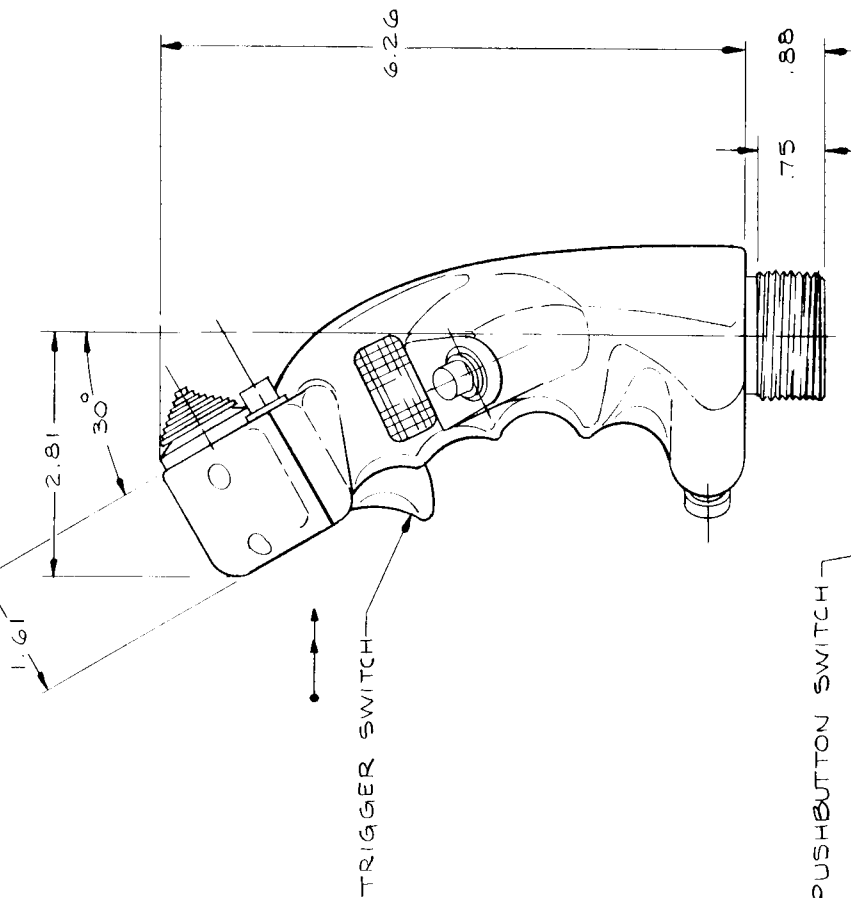
MATERIAL: MOLDED FIBER FILLED THERMOSETTING PLASTIC.

2. DIMENSIONS APPLY AFTER PLATING.
 1. REMOVE ALL BURRS AND SHARP EDGES; SPRUE AND ALL FLASH; GATES, FINS AND RISERS.
- NOTES, GENERAL, UNLESS OTHERWISE SPECIFIED AND AS APPLICABLE:

REV STATUS OF SHEETS	
SM	REV
1	1
2	2
3	3

SYMBOL	DESCRIPTION	DATE	APPROVED

4 WAY TOGGLE SWITCH



FIND NO	QTY RECD	CODE IDENT NO	PART OR IDENTIFYING NUMBER	NOMENCLATURE OR DESCRIPTION	NOTE
				MATERIALS OR PARTS LIST	
UNLESS OTHERWISE SPECIFIED DIMENSIONS ARE IN INCHES					
TOLERANCES					
DECIMALS					
ANGLES					
SURF FINISH					
XXX ± .005					
± 1°					
HEAT TREAT					
FINISH					
SYMBOLS					
PARTS LIST					
FIND NO					
PREPARED					
CHECKED					
APPROVED					
SIZE CODE IDENT NO					
C 81579					
SCALE					
WT					
SHEET					

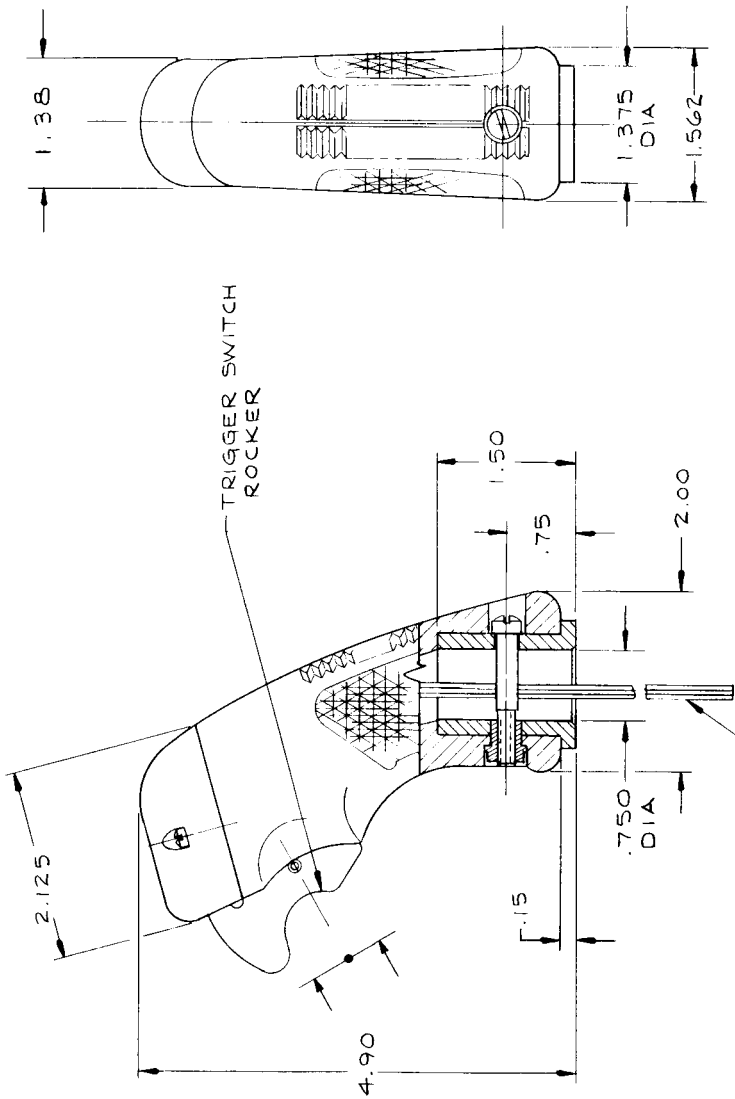


GRIP ASSEMBLY,
CONTROL

MATERIAL: MOLDED FIBER FILLED
THERMOSETTING PLASTIC
WITH THREADED METAL ADAPTER.

2. DIMENSIONS APPLY AFTER PLATING.
 1. REMOVE ALL BURRS AND SHARP EDGES; SPRUE AND ALL FLASH; GATES, FINS AND RISERS.
- NOTES, GENERAL, UNLESS OTHERWISE SPECIFIED AND AS APPLICABLE:

REVISIONS		DATE	APPROVED	REV STATUS OF SHEETS
SYM	DESCRIPTION			SH REV
				1
				2
				3



FIND NO	QTY RECD	CODE IDENT NO	PART OR IDENTIFYING NUMBER	NOMENCLATURE OR DESCRIPTION	NOTE
				MATERIALS OR PARTS LIST	
UNLESS OTHERWISE SPECIFIED DIMENSIONS ARE IN INCHES					
DECIMALS TOLERANCES					
.XX ±.01					
XXX ±.005					
ANGLES ±1°					
SURF FINISH					
HEAT TREAT					
FINISH					
SYMBOLS					
PARTS LIST					
FIND NO					
NOTES					
PREPARED					
CHECKED					
APPROVED					
SIZE CODE IDENT NO					
C 81579					
SCALE / WT					
SHEET					

MASON ELECTRIC COMPANY, INC

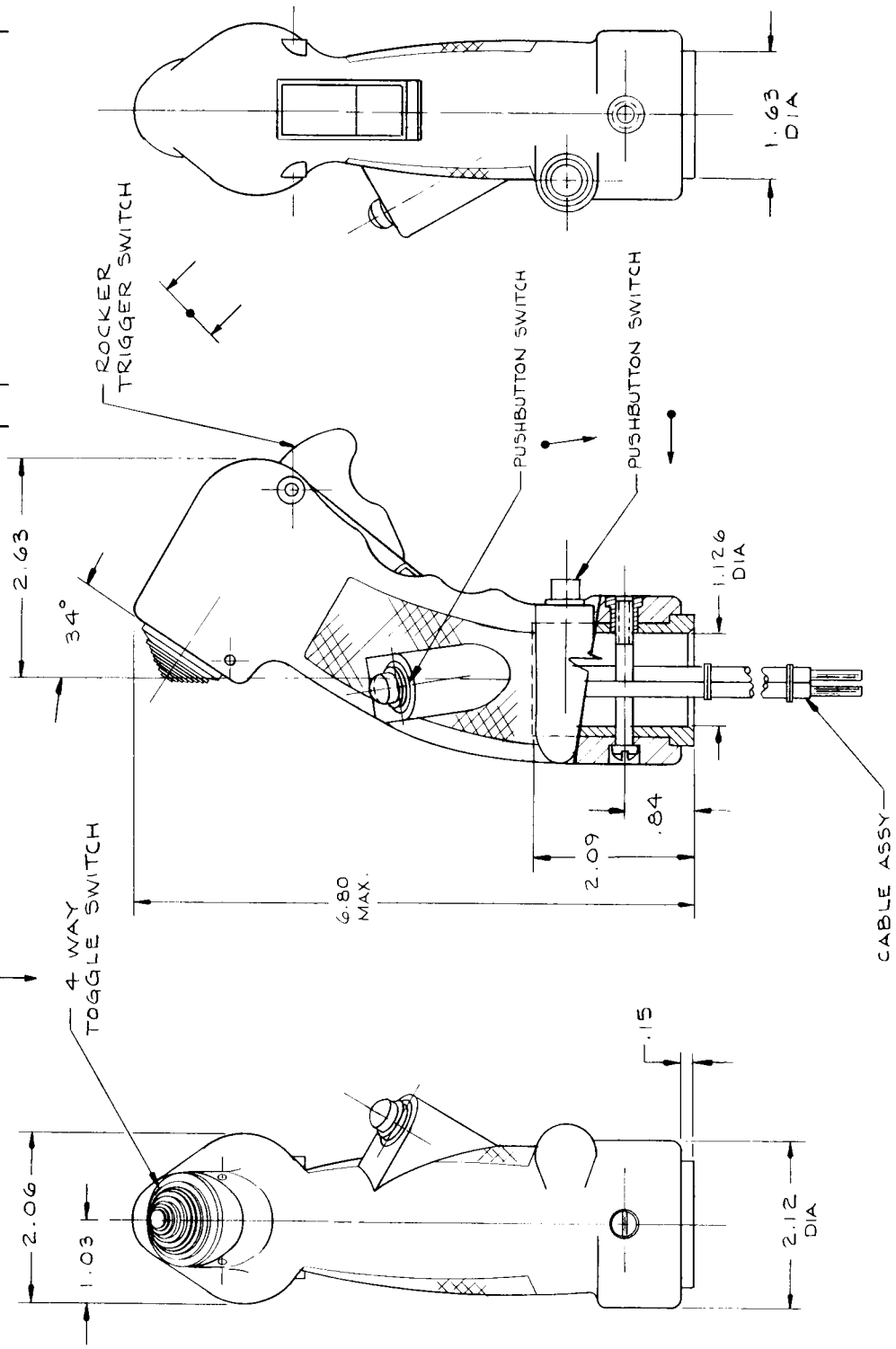
GRIP ASSEMBLY CONTROL

MATERIAL: MOLDED FIBER FILLED THERMOSETTING PLASTIC WITH METAL INSERT.

2. DIMENSIONS APPLY AFTER PLATING.
1. REMOVE ALL BURRS AND SHARP EDGES; SPRUE AND ALL FLASH; GATES, FINS AND RISERS.
- NOTES, GENERAL, UNLESS OTHERWISE SPECIFIED AND AS APPLICABLE:

REV STATUS OF SHEETS	
SH	REV
1	
2	
3	

SYMBOL	DESCRIPTION	DATE	APPROVED



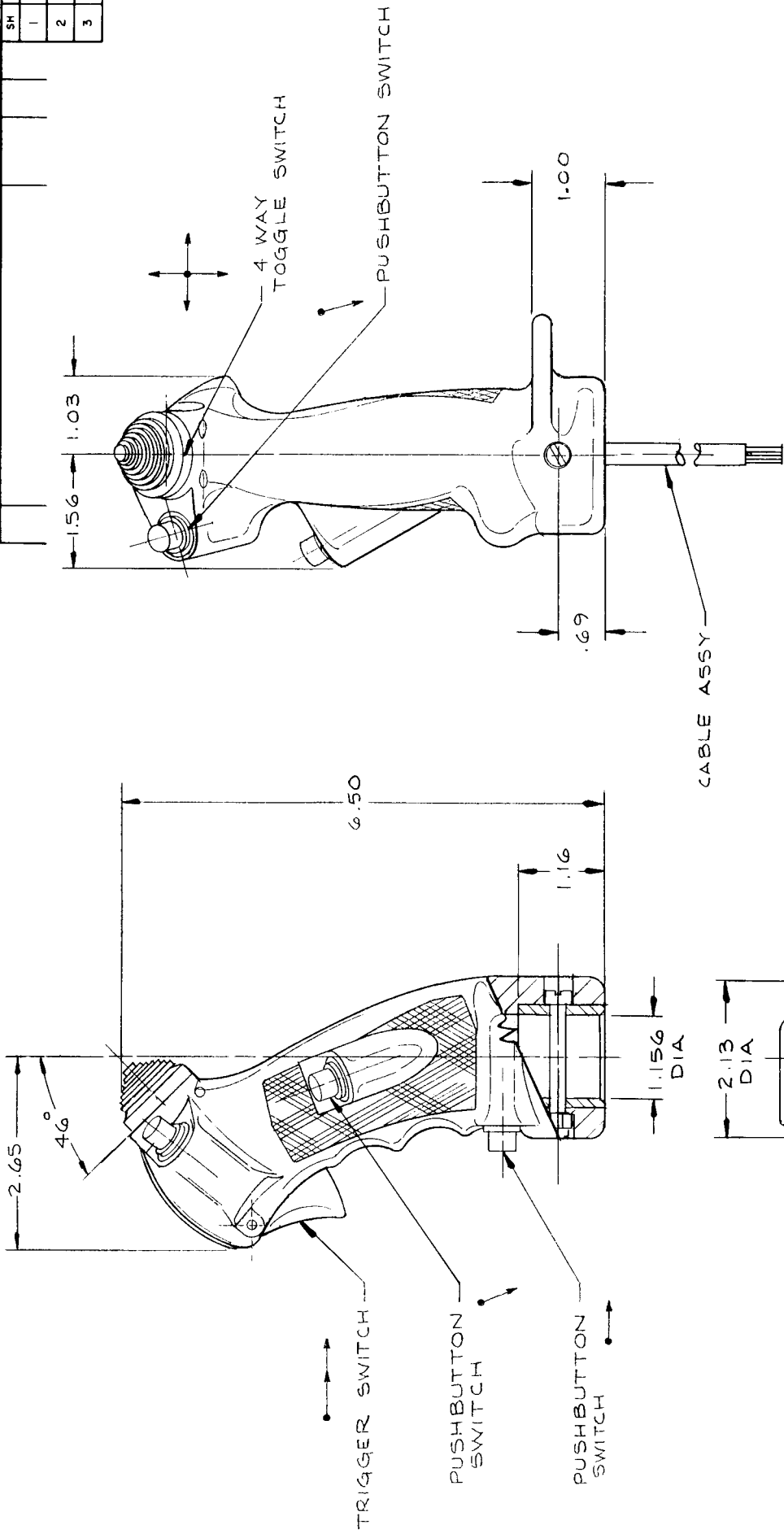
FIND NO	QTY	CODE	PART OR IDENTIFYING NUMBER	NOMENCLATURE OR DESCRIPTION	NOTE
MATERIALS OR PARTS LIST				MASON ELECTRIC COMPANY, INC	
UNLESS OTHERWISE SPECIFIED DIMENSIONS ARE IN INCHES				GRIP ASSEMBLY, CONTROL, LEFT-HAND	
TOLERANCES				SIZE CODE IDENT NO	
DECIMALS ±.01				C 81579	
ANGLES ±1°				SCALE / WT	
SURF FINISH					
XXX ±.005					
HEAT TREAT				PREPARED	
FINISH				CHECKED	
				APPROVED	
SYMBOLS				PARTS LIST	
				FIND NO	
NOTES					

MATERIAL: MOLDED THERMOPLASTIC WITH METAL INSERT

2. DIMENSIONS APPLY AFTER PLATING.
 1. REMOVE ALL BURRS AND SHARP EDGES; SPRUE AND ALL FLASH; GATES, FINS AND RISERS.
 NOTES, GENERAL, UNLESS OTHERWISE SPECIFIED AND AS APPLICABLE:

REV STATUS		REV OF SHEETS	
SH	REV	SH	REV
1		1	
2		2	
3		3	

REVISIONS			
SYM	DESCRIPTION	DATE	APPROVED



FIND NO	QTY	CODE	IDENT NO	PART OR IDENTIFYING NUMBER	NOMENCLATURE OR DESCRIPTION	NOTE
MATERIALS OR PARTS LIST						
UNLESS OTHERWISE SPECIFIED DIMENSIONS ARE IN INCHES						
DECIMALS TOLERANCES						
XX ± 0.1 ANGLES SURF FNISH						
XXX ± 0.005 ± 1° ✓						
HEAT TREAT FINISH						
SYMBOLS						
NOTES <input type="checkbox"/> PARTS LIST						
FIND NO						
PREPARED						
CHECKED						
APPROVED						
SIZE CODE IDENT NO						
C 81579						
SCALE / WT						
SHEET						



MASON ELECTRIC COMPANY, INC

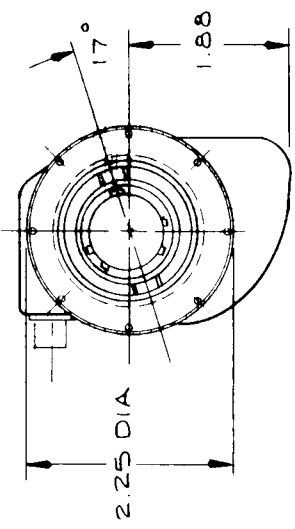
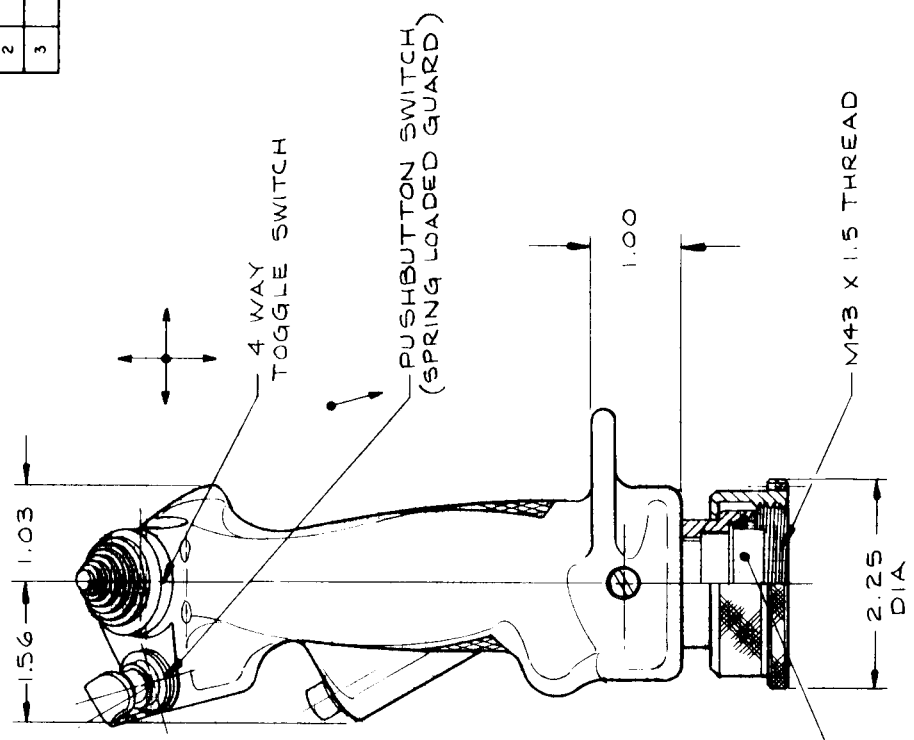
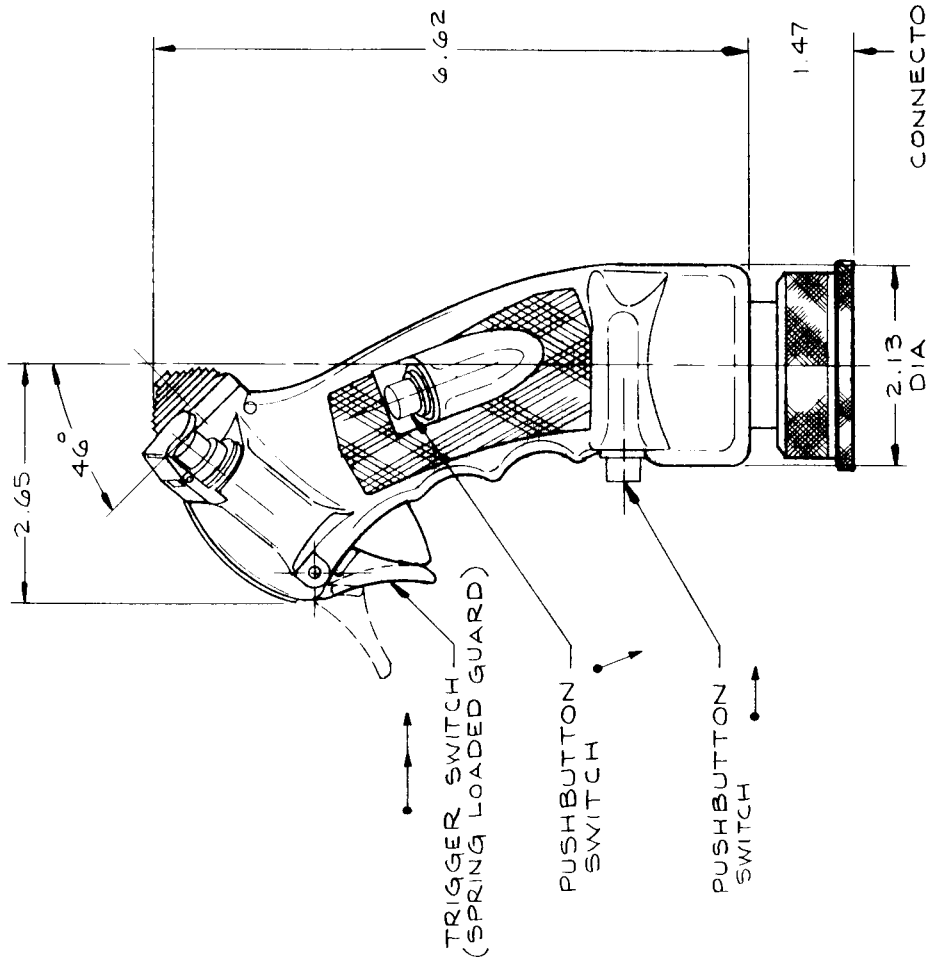
GRIP ASSEMBLY CONTROL

MATERIAL : MOLDED THERMOPLASTIC WITH CORROSION RESISTANT STEEL ADAPTER

2. DIMENSIONS APPLY AFTER PLATING.
 1. REMOVE ALL BURRS AND SHARP EDGES; SPRUE AND ALL FLASH; GATES, FINS AND RISERS.
- NOTES, GENERAL, UNLESS OTHERWISE SPECIFIED AND AS APPLICABLE:

REV STATUS OF SHEETS	
SH	REV
1	
2	
3	

REVISIONS		DATE	APPROVED
SYM	DESCRIPTION		



CONNECTOR ASSY

FIND NO	QTY	CODE	IDENTIFYING NUMBER	PART OR IDENTIFYING NUMBER	NOMENCLATURE OR DESCRIPTION	NOTE
					MATERIALS OR PARTS LIST	

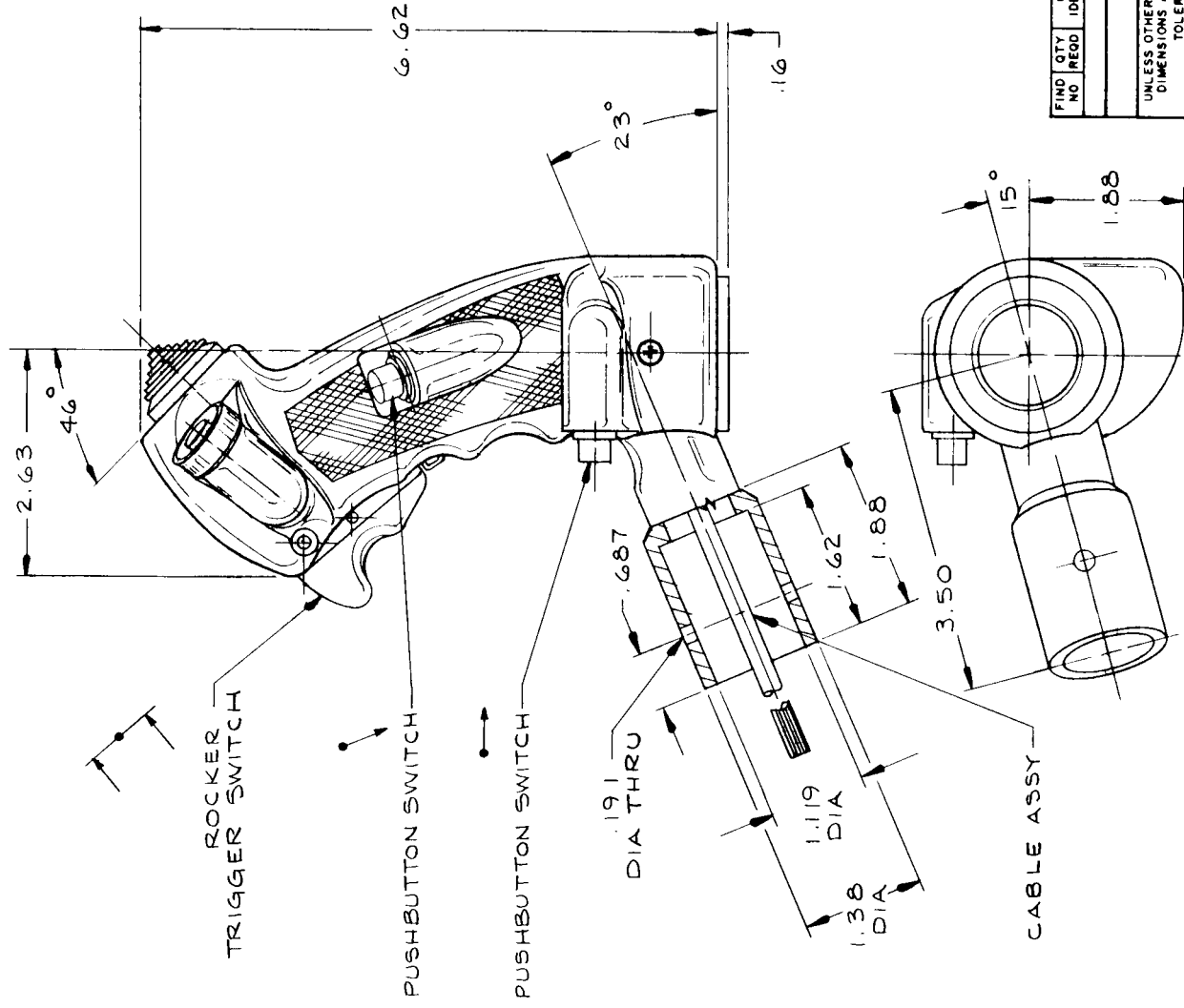
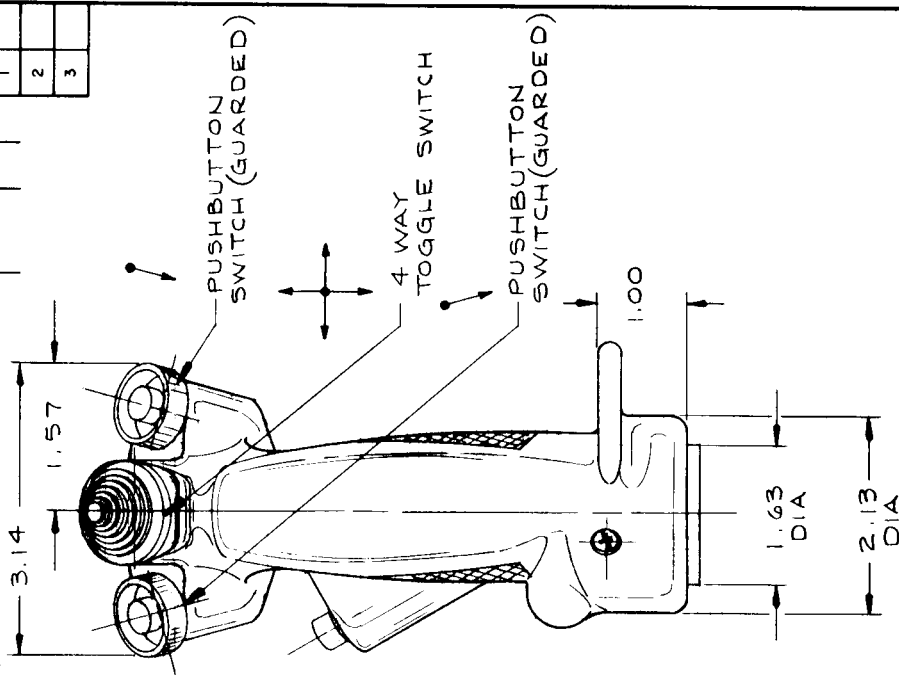
UNLESS OTHERWISE SPECIFIED DIMENSIONS ARE IN INCHES	
DECIMALS	TOLERANCES
XX 3.01	ANGLES SURF FINISH
XXX 3.008	1°
HEAT TREAT	FINISH
SYMBOLS	PARTS LIST
NOTES	FIND NO
PREPARED	CHECKED
	APPROVED

MASON ELECTRIC COMPANY, INC	
GRIP ASSEMBLY, CONTROL	
SIZE	CODE IDENT NO
C 81579	
SCALE	WT
	SHEET

MATERIAL: MOLOED THERMOPLASTIC WITH CORROSION RESISTANT STEEL ADAPTER, AND METAL THREADED COUPLING NUT.

2. DIMENSIONS APPLY AFTER PLATING.
1. REMOVE ALL BURRS AND SHARP EDGES; SPRUE AND ALL FLASH; GATES, FINS AND RISERS.
- NOTES, GENERAL, UNLESS OTHERWISE SPECIFIED AND AS APPLICABLE:

REV STATUS OF SHEETS		REVISIONS		DATE		APPROVED	
SYM	DESCRIPTION	DATE	APPROVED	SH	REV	DATE	APPROVED
				1			
				2			
				3			



MATERIAL: MOLDED THERMOPLASTIC WITH METAL ADAPTER.

- DIMENSIONS APPLY AFTER PLATING.
 - REMOVE ALL BURRS AND SHARP EDGES; SPRUE AND ALL FLASH; GATES, FINS AND RISERS.
- NOTES, GENERAL, UNLESS OTHERWISE SPECIFIED AND AS APPLICABLE:

FIND NO	QTY	CODE	IDENTIFYING NUMBER	PART OR IDENTIFYING NUMBER	NOMENCLATURE OR DESCRIPTION	NOTE
					MATERIALS OR PARTS LIST	

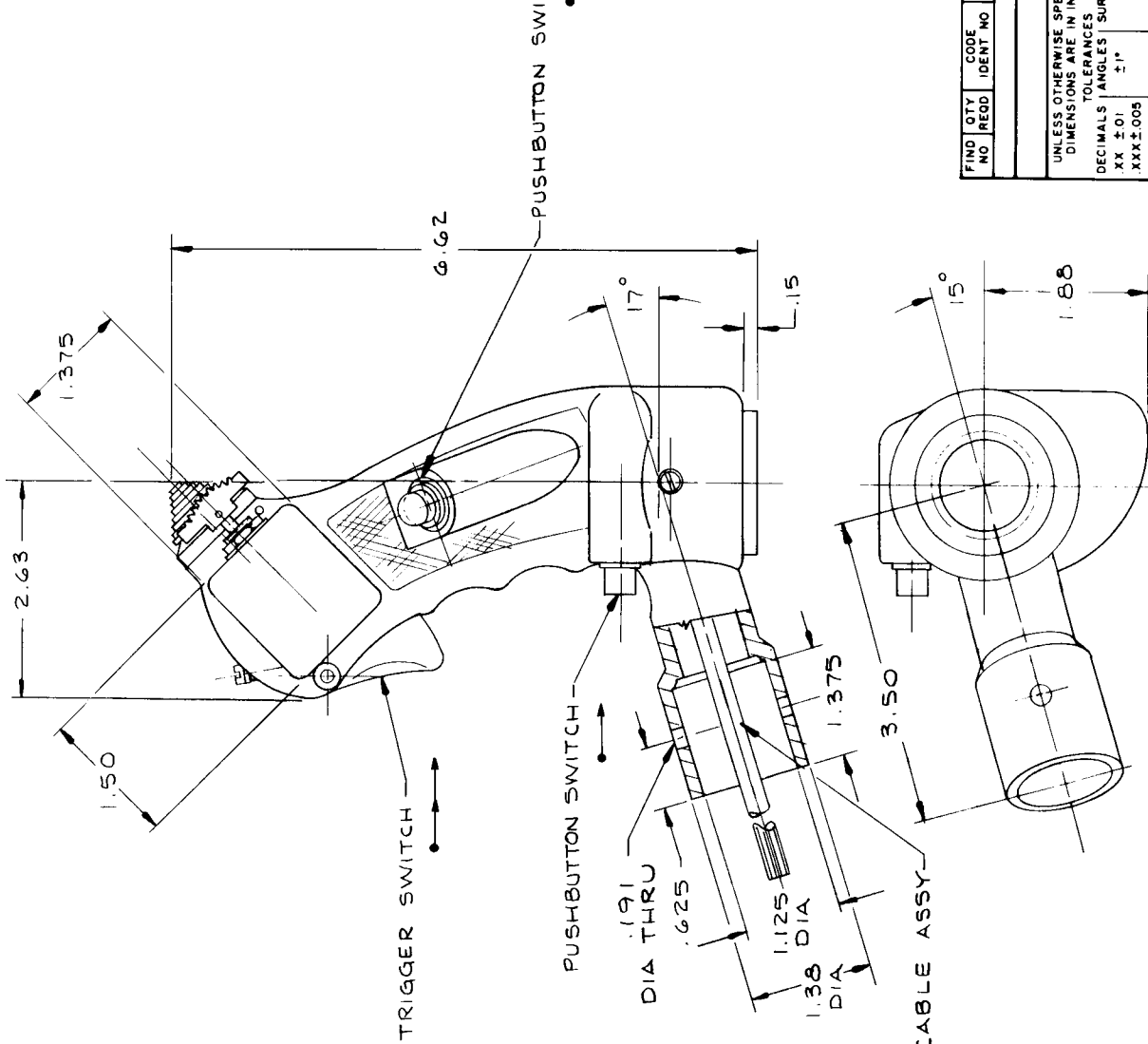
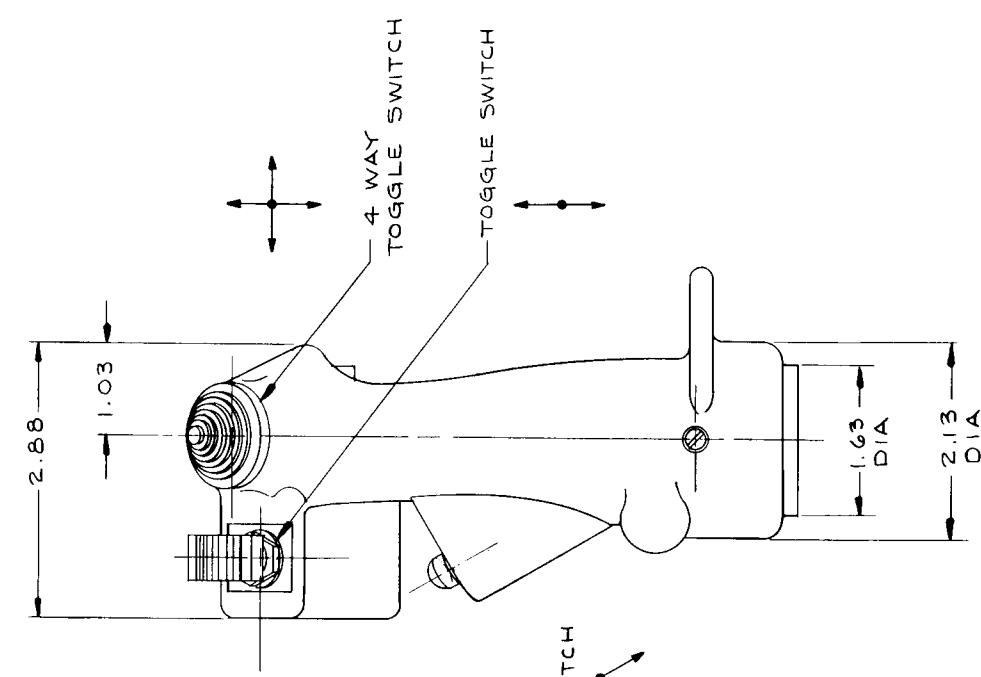
UNLESS OTHERWISE SPECIFIED DIMENSIONS ARE IN INCHES	
DECIMALS	TOLERANCES
XX ± 0.1	± 1°
XXX ± 0.05	± 1°
HEAT TREAT	FINISH
	✓

SYMBOLS	FINO NO LIST
NOTES	FINO NO
PREPARED	CHECKED
APPROVED	

MASON ELECTRIC COMPANY, INC	
GRIP ASSEMBLY, CONTROL	
SIZE CODE IDENT NO	C 81579
SCALE	WT
	SHEET

REV STATUS OF SHEETS	
SH	REV
1	
2	
3	

REVISIONS	
DESCRIPTION	DATE



MATERIAL : MOLDED THERMOPLASTIC WITH METAL ADAPTER.

2. DIMENSIONS APPLY AFTER PLATING.
1. REMOVE ALL BURRS AND SHARP EDGES; SPRUE AND ALL FLASH; GATES, FINS AND RISERS.
NOTES, GENERAL, UNLESS OTHERWISE SPECIFIED AND AS APPLICABLE:

FIND NO	QTY REQD	CODE IDENT NO	PART OR IDENTIFYING NUMBER	NOMENCLATURE OR DESCRIPTION	NOTE
MATERIALS OR PARTS LIST					
UNLESS OTHERWISE SPECIFIED DIMENSIONS ARE IN INCHES					
TOLERANCES					
DECIMALS					
ANGLES					
SURF FINSH					
XX ±.01					
XXX ±.005					
HEAT TREAT					
FINISH					
SYMBOLS					
PARTS LIST					
FIND NO					
PREPARED					
CHECKED					
APPROVED					
SIZE CODE IDENT NO					
C 81579					
SCALE / WT					
SHEET					

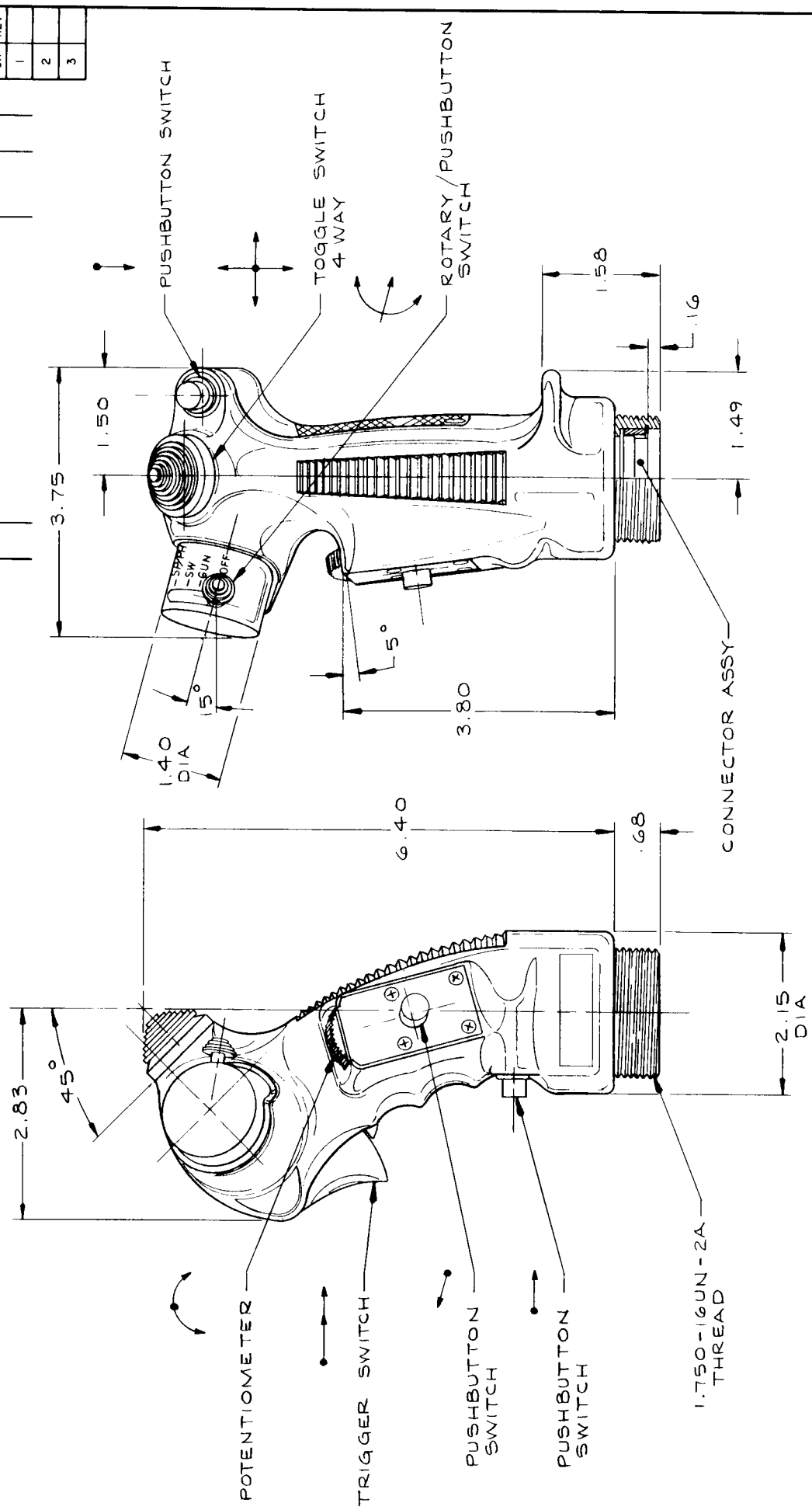


MASON ELECTRIC COMPANY, INC

GRIP ASSEMBLY,
CONTROL

REV STATUS OF SHEETS	
SH	REV
1	
2	
3	

SYMBOL	DESCRIPTION	DATE	APPROVED



FIND NO	QTY	CODE	PART OR IDENTIFYING NUMBER	NOMENCLATURE OR DESCRIPTION	NOTE
MATERIALS OR PARTS LIST					
UNLESS OTHERWISE SPECIFIED DIMENSIONS ARE IN INCHES					
TOLERANCES					
DECIMALS / ANGLES / SURF FNISH					
XX ±.01 ±"					
XXX ±.005 ±"					
HEAT TREAT FINISH					
SYMBOLS					
PARTS LIST					
FIND NO					
PREPARED					
CHECKED					
APPROVED					
SIZE CODE IDENT NO					
C 81579					
SCALE / WT					
SHEET					



MASON ELECTRIC COMPANY, INC

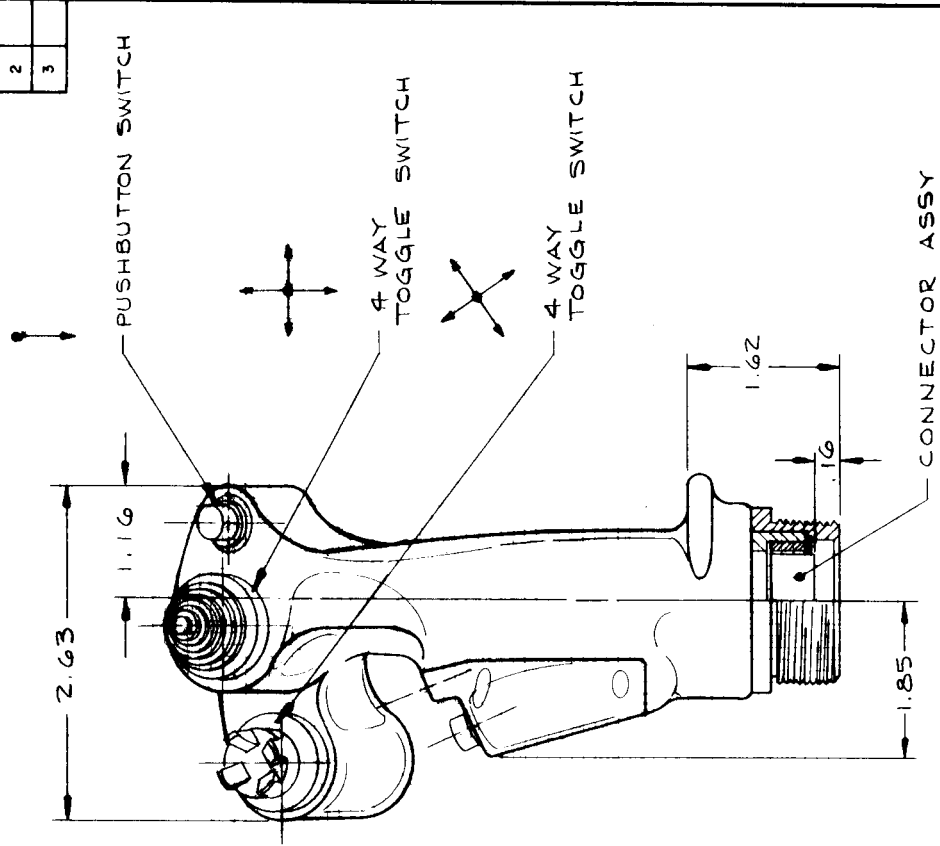
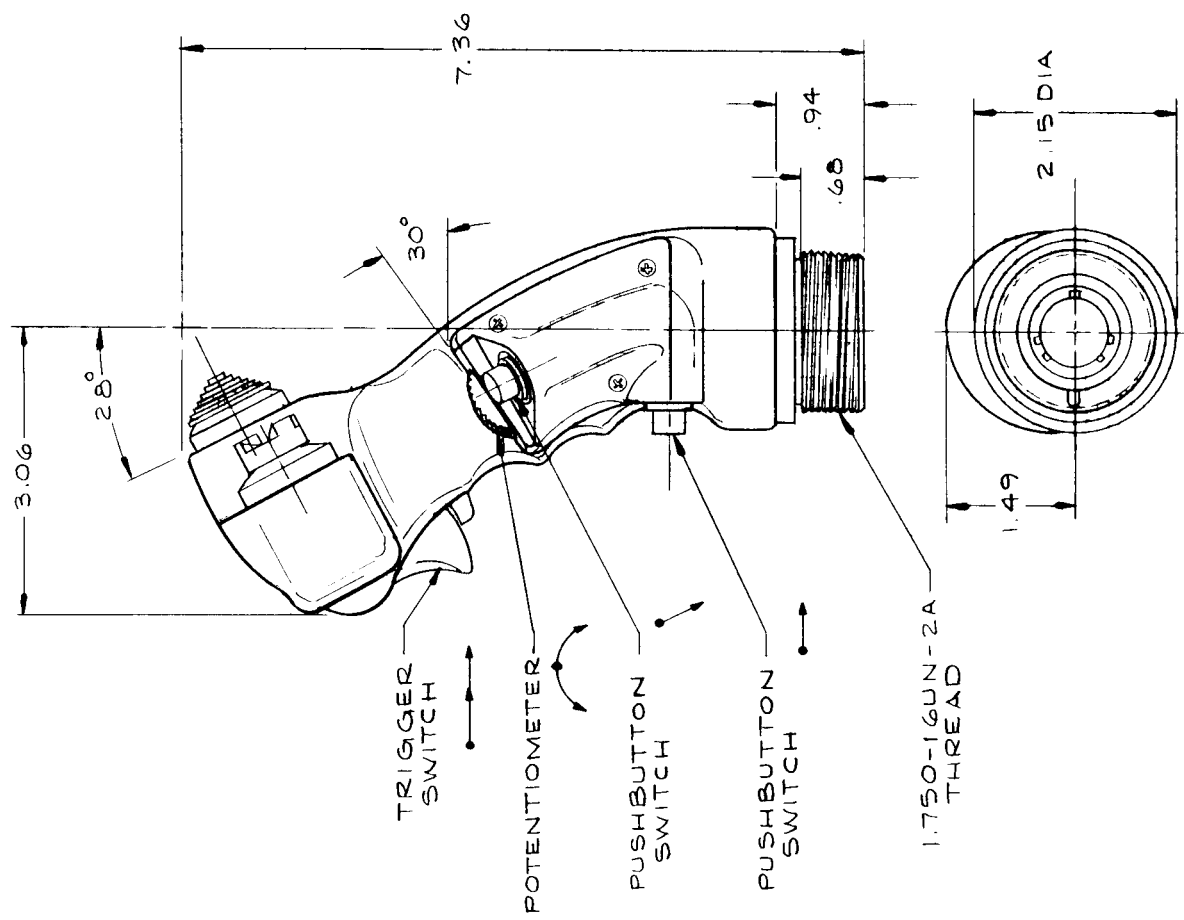
MATERIAL: MOLDED FIBER FILLED THERMOSETTING PLASTIC WITH THREADED METAL ADAPTER.

- 2. DIMENSIONS APPLY AFTER PLATING.
- 1. REMOVE ALL BURRS AND SHARP EDGES; SPRUE AND ALL FLASH; GATES, FINS AND RISERS.

NOTES, GENERAL, UNLESS OTHERWISE SPECIFIED AND AS APPLICABLE:

REV STATUS OF SHEETS	
SH	REV
1	
2	
3	

REVISIONS		DATE	APPROVED
SYM	DESCRIPTION		



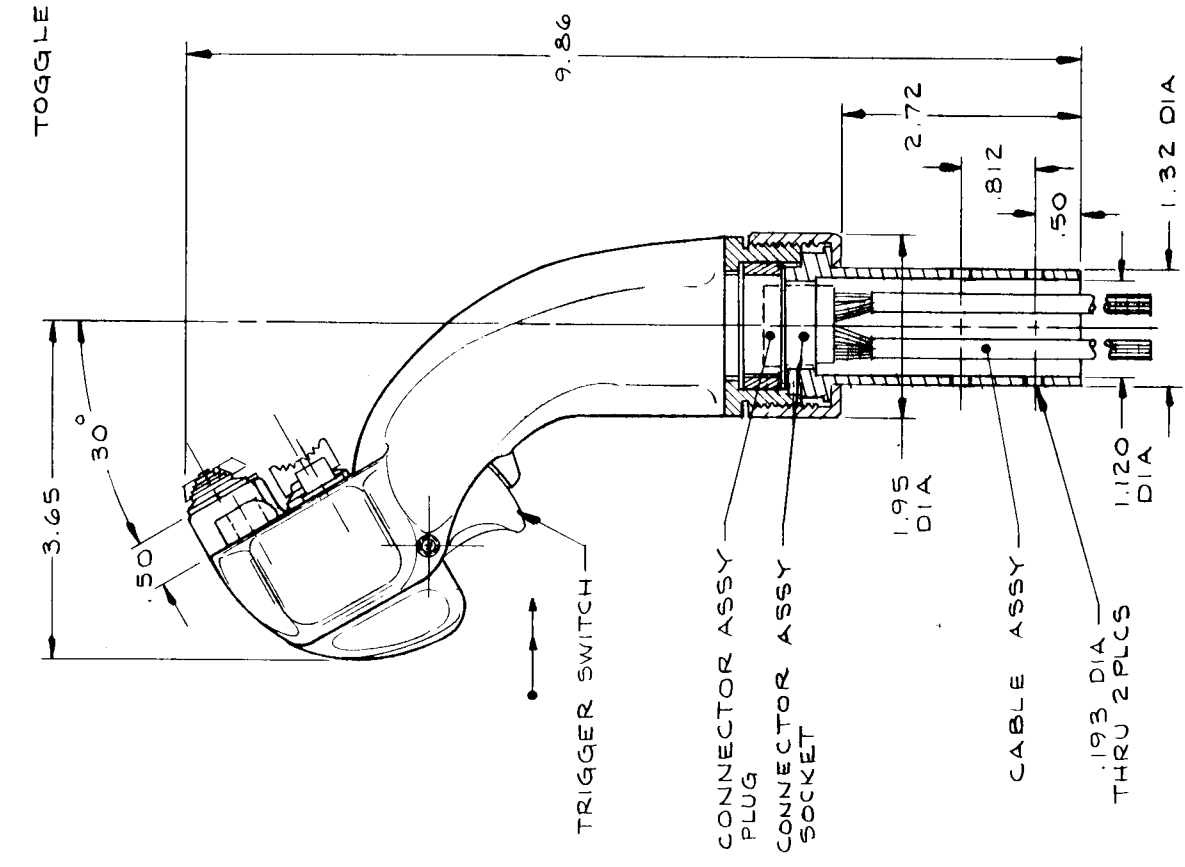
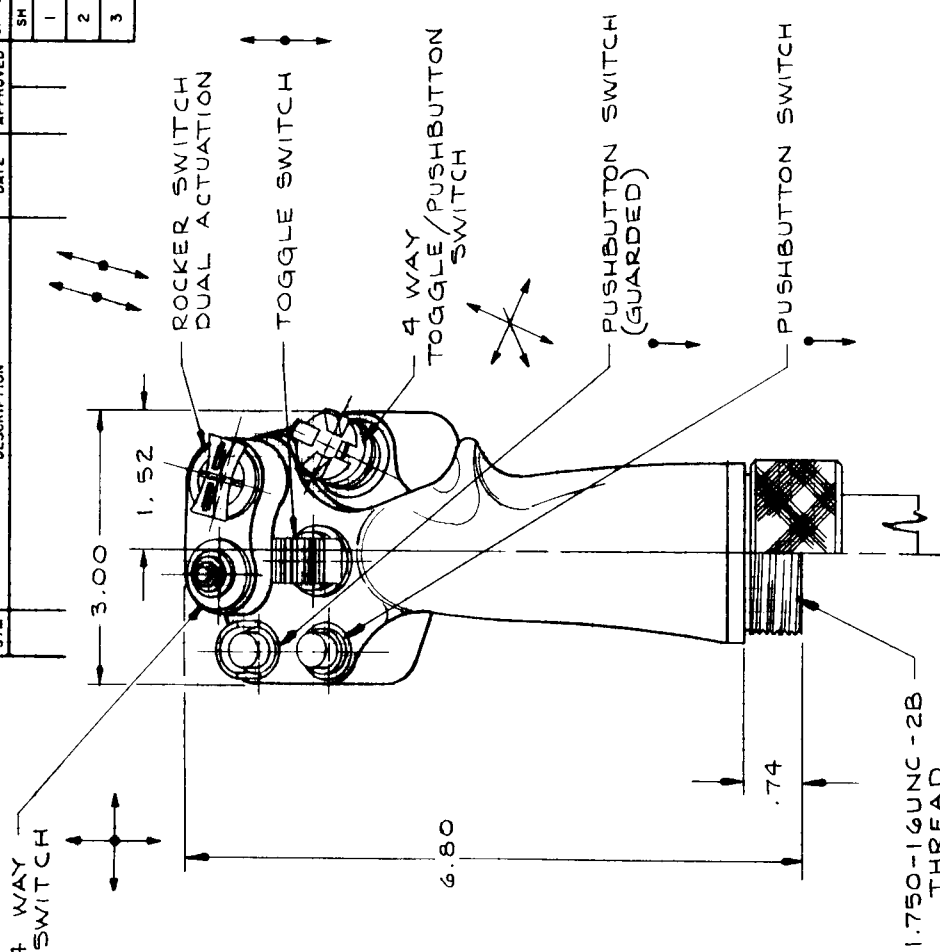
FIND NO	QTY	CODE	IDENTIFYING NUMBER	PART OR IDENTIFYING NUMBER	NOMENCLATURE OR DESCRIPTION	NOTE
MATERIALS OR PARTS LIST						
UNLESS OTHERWISE SPECIFIED DIMENSIONS ARE IN INCHES						
TOLERANCES						
DECIMALS / ANGLES / SURF FINISH						
XX ±.01 / ±1° / ✓						
XXX ±.008						
HEAT TREAT						
FINISH						
SYMBOLS LIST						
△ NOTES						
□ FIND NO						
PREPARED						
CHECKED						
APPROVED						
MASON ELECTRIC COMPANY, INC						
GRIP ASSEMBLY, CONTROL						
SIZE CODE IDENT NO						
C 81579						
SCALE / 1" = 1"						
SHEET						

MATERIAL: THIN WALLED ALUMINUM INVESTMENT CASTING WITH CORROSION RESISTANT STEEL THREADED ADAPTER.

- DIMENSIONS APPLY AFTER PLATING.
 - REMOVE ALL BURRS AND SHARP EDGES; SPRUE AND ALL FLASH; GATES, FINS AND RISERS.
- NOTES, GENERAL, UNLESS OTHERWISE SPECIFIED AND AS APPLICABLE:

REV STATUS OF SHEETS	
SH	REV
1	
2	
3	

REVISIONS		DATE	APPROVED
SYM	DESCRIPTION		



MATERIAL: ALUMINUM INVESTMENT CASTING WITH CORROSION RESISTANT STEEL ADAPTER AND METAL THREADED COUPLING NUT AND METAL MOUNTING TUBE.

2. DIMENSIONS APPLY AFTER PLATING.
 1. REMOVE ALL BURRS AND SHARP EDGES; SPRUE AND ALL FLASH; GATES, FINS AND RISERS.
 NOTES, GENERAL, UNLESS OTHERWISE SPECIFIED AND AS APPLICABLE:

FIND NO	QTY	CODE	IDENT NO	PART OR IDENTIFYING NUMBER	NOMENCLATURE OR DESCRIPTION	NOTE

UNLESS OTHERWISE SPECIFIED DIMENSIONS ARE IN INCHES	
TOLERANCES	
DECIMALS	±.01
ANGLES	±1°
SURF FINISH	✓
XXX±.005	
HEAT TREAT	
FINISH	
SYMBOLS	
NOTES	
PARTS LIST	
FIND NO	
PREPARED	
CHECKED	
APPROVED	
SIZE CODE IDENT NO	C 81579
SCALE	/ WT
SHEET	



GRIP ASSEMBLY,
CONTROL, LEFT-HAND

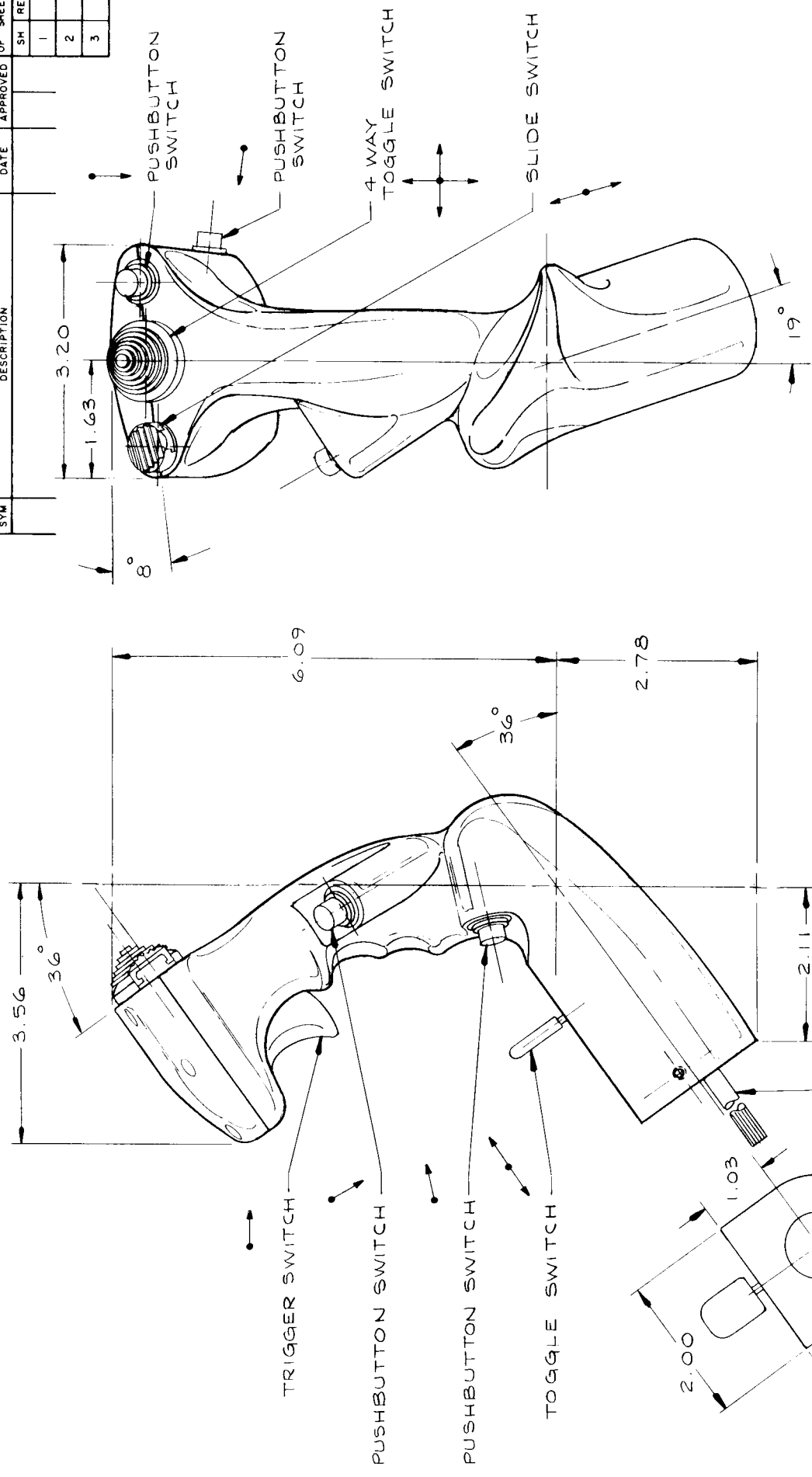
SIZE CODE IDENT NO
C 81579

SHEET

REV STATUS OF SHEETS	
SH	REV
1	
2	
3	

REVISIONS	
DESCRIPTION	DATE

SYM	DESCRIPTION	DATE	APPROVED



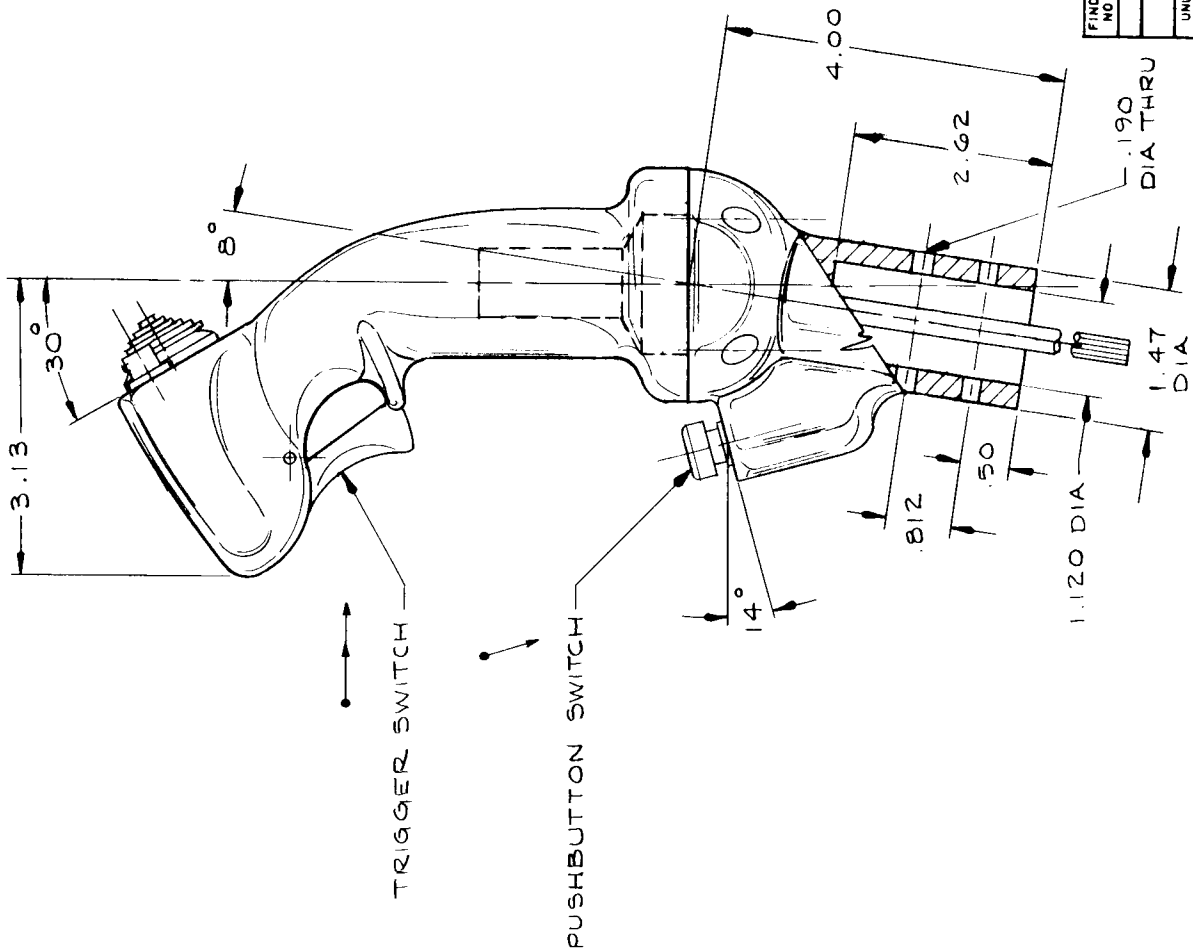
FIND NO	QTY	CODE	PART OR IDENTIFYING NUMBER	NOMENCLATURE OR DESCRIPTION	NOTE
MATERIALS OR PARTS LIST					
UNLESS OTHERWISE SPECIFIED DIMENSIONS ARE IN INCHES					
DECIMALS TOLERANCES					
XX ± 0.1 ANGLES SURF FINISH					
XXX ± 0.005 ± 1° ✓					
HEAT TREAT FINISH					
SYMBOLS					
PARTS LIST					
FIND NO					
PREPARED					
CHECKED					
APPROVED					
MASON ELECTRIC COMPANY, INC					
GRIP ASSEMBLY, CONTROL					
SIZE CODE IDENT NO					
C 81579					
SCALE / WT					
SHEET					

MATERIAL : ALUMINUM INVESTMENT CASTING .

2. DIMENSIONS APPLY AFTER PLATING.
1. REMOVE ALL BURRS AND SHARP EDGES; SPRUE AND ALL FLASH; GATES, FINIS AND RISERS.
- NOTES, GENERAL, UNLESS OTHERWISE SPECIFIED AND AS APPLICABLE:

REV STATUS OF SHEETS	
SH	REV
1	
2	
3	

REVISIONS		DATE	APPROVED
SYM	DESCRIPTION		



MATERIALS OR PARTS LIST		NOMENCLATURE OR DESCRIPTION		NOTE	
FIND NO	QTY REQD	CODE IDENT NO	PART OR IDENTIFYING NUMBER		
UNLESS OTHERWISE SPECIFIED DIMENSIONS ARE IN INCHES					
TOLERANCES					
DECIMALS	ANGLES	SURF FINISH			
.XX ±.01	±1°	✓			
.XXX ±.005					
HEAT TREAT		FINISH		SYMBOLS	
				PARTS LIST	
				FIND NO	
				PREPARED	
				CHECKED	
				APPROVED	
				SIZE CODE IDENT NO	
				C 81579	
				SCALE / WT	
				SHEET	

MATERIAL: MOLDED FIBER FILLED THERMOPLASTIC WITH ALUMINUM INVESTMENT CAST ADAPTER.

2. DIMENSIONS APPLY AFTER PLATING.

1. REMOVE ALL BURRS AND SHARP EDGES; SPRUE AND ALL FLASH; GATES, FINS AND RISERS.

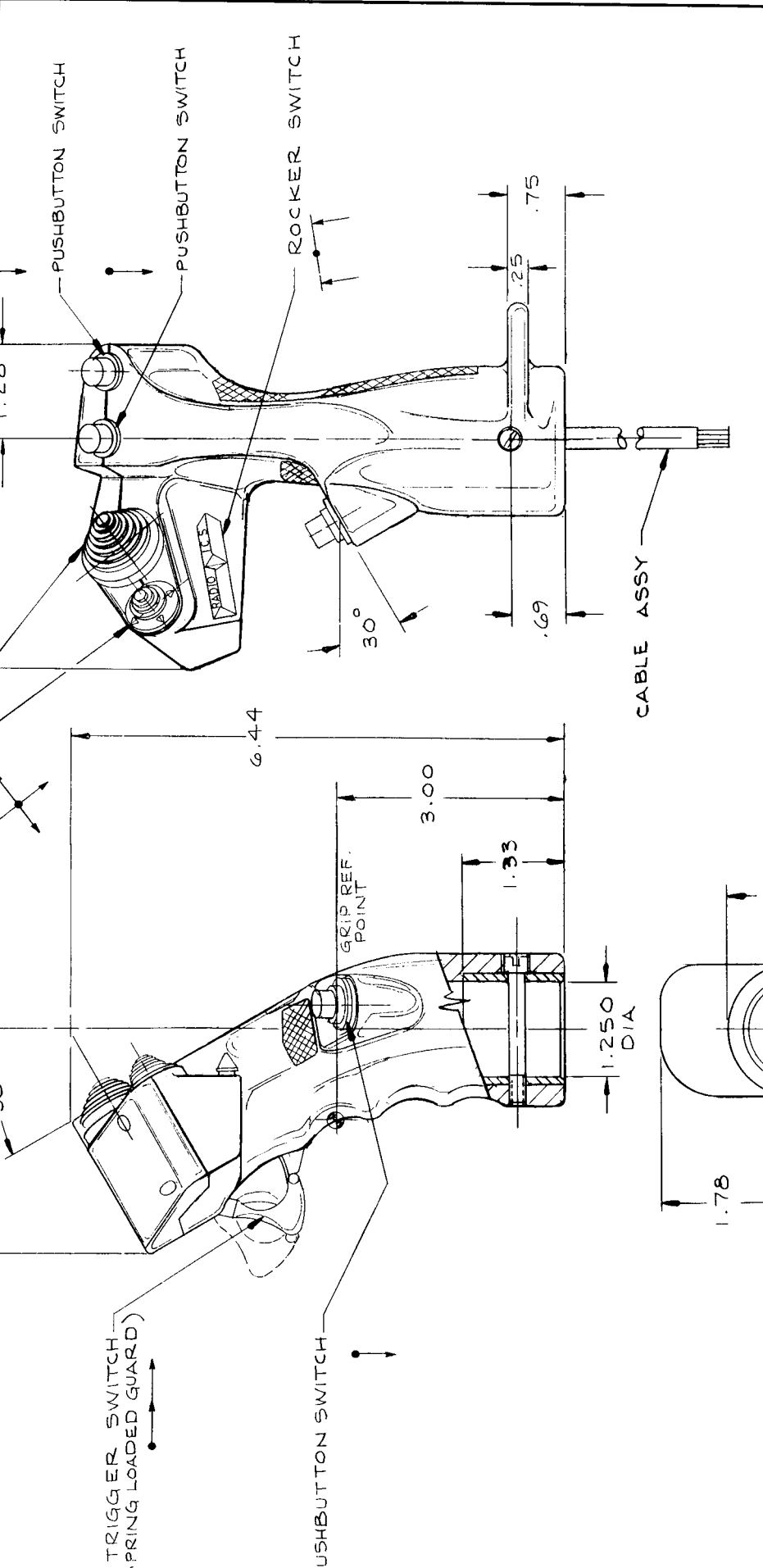
NOTES, GENERAL, UNLESS OTHERWISE SPECIFIED AND AS APPLICABLE:

MASON ELECTRIC COMPANY, INC

GRIP ASSEMBLY, CONTROL

REV STATUS		REV SHEETS	
SH	REV	1	
		2	
		3	

REVISIONS		DATE	APPROVED
SYM	DESCRIPTION		



FIND NO	QTY	CODE	PART OF	IDENTIFYING NUMBER	NOMENCLATURE OR DESCRIPTION	NOTE
MATERIALS OR PARTS LIST						
UNLESS OTHERWISE SPECIFIED DIMENSIONS ARE IN INCHES						
TOLERANCES						
DECIMALS	ANGLES	SURF FINISH				
XX ±.01	±1°	✓				
XXX ±.005						
HEAT TREAT			FINISH			
SYMBOLS			PARTS LIST			
△ NOTES			□ FIND NO			
PREPARED			CHECKED			
APPROVED			APPROVED			
SIZE CODE IDENT NO			C 81579			
SCALE			WT			
SHEET			SHEET			



MASON ELECTRIC COMPANY, INC

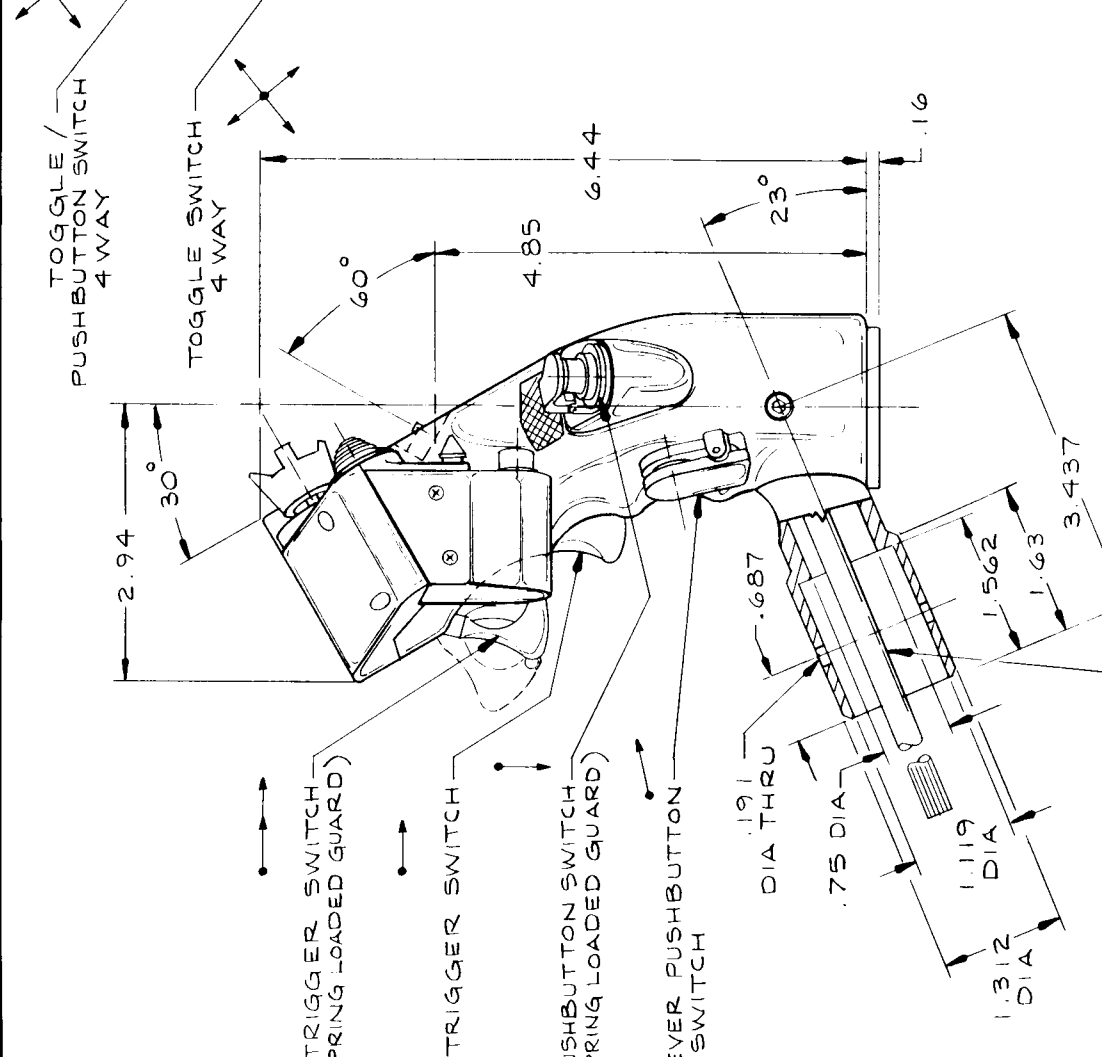
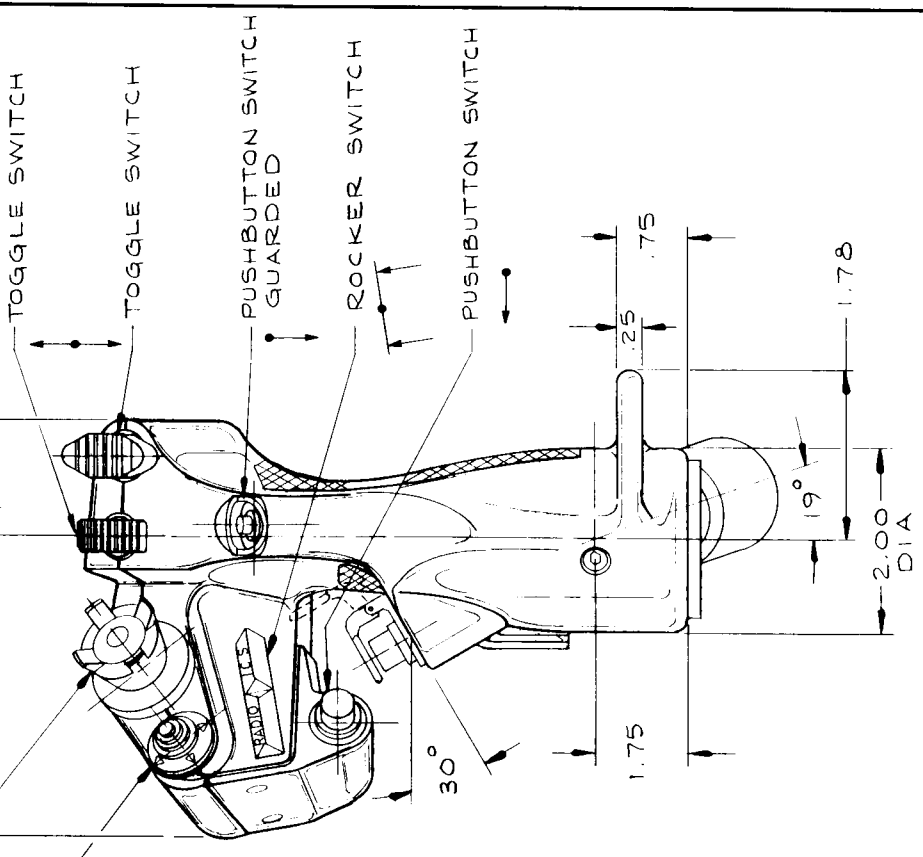
GRIP ASSEMBLY CONTROL

MATERIAL: MOLDED FIBER FILLED THERMOSETTING PLASTIC WITH METAL ADAPTER

2. DIMENSIONS APPLY AFTER PLATING.
 1. REMOVE ALL BURRS AND SHARP EDGES; SPRUE AND ALL FLASH; GATES, FINS AND RISERS.
- NOTES, GENERAL, UNLESS OTHERWISE SPECIFIED AND AS APPLICABLE:

REV STATUS		REV STATUS	
DESCRIPTION	DATE	APPROVED	SH REV
			1
			2
			3

SYM	DESCRIPTION	DATE	APPROVED



FIND NO	QTY	CODE	IDENT NO	PART OR IDENTIFYING NUMBER	NOMENCLATURE OR DESCRIPTION	NOTE
					MATERIALS OR PARTS LIST	

UNLESS OTHERWISE SPECIFIED DIMENSIONS ARE IN INCHES	
DECIMALS	± .01
TOLERANCES	± .1°
ANGLES	± 1°
SURF FINISH	✓
HEAT TREAT	FINISH
SYMBOLS	PARTS LIST
□	FIND NO
△	NOTES
PREPARED	
CHECKED	
APPROVED	
SIZE CODE IDENT NO	C 81579
SCALE	/ WT
	SHEET

MASON ELECTRIC COMPANY, INC

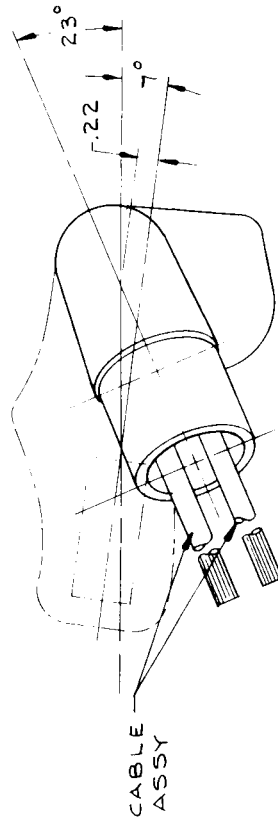
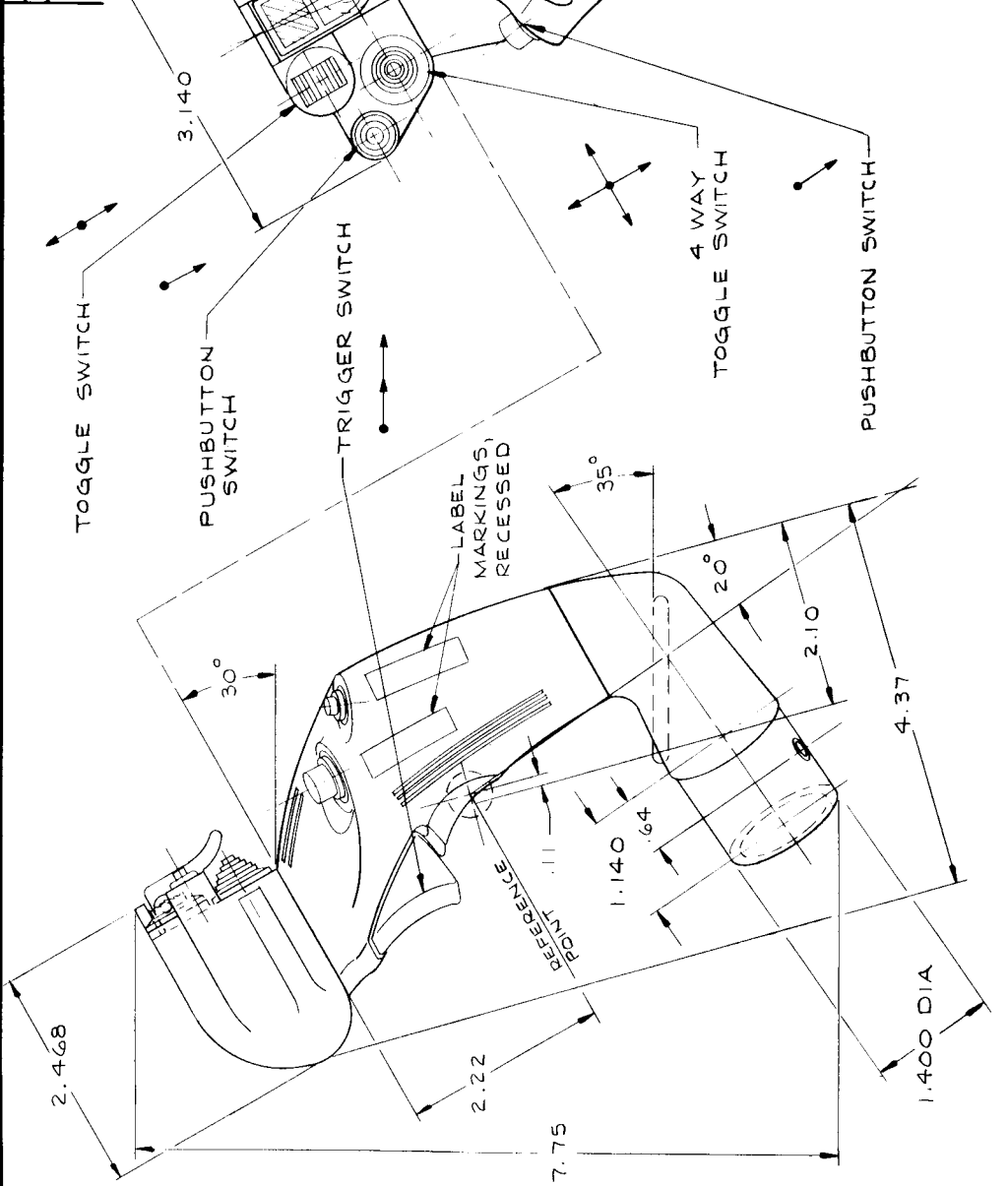
GRIP ASSEMBLY CONTROL

MATERIAL: MOLDED FIBER FILLED THERMOSETTING PLASTIC WITH METAL ADAPTER

2. DIMENSIONS APPLY AFTER PLATING.
 1. REMOVE ALL BURRS AND SHARP EDGES; SPRUE AND ALL FLASH; GATES, FINS AND RISERS.
 NOTES, GENERAL, UNLESS OTHERWISE SPECIFIED AND AS APPLICABLE:

REV STATUS OF SHEETS	
SM	REV
1	
2	
3	

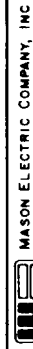
REVISIONS		DATE	APPROVED
SYM	DESCRIPTION		



MATERIAL: MOLDED FIBER FILLED THERMOPLASTIC WITH METAL INSERT.

2. DIMENSIONS APPLY AFTER PLATING.
 1. REMOVE ALL BURRS AND SHARP EDGES; SPRUE AND ALL FLASH; GATES, FINS AND RISERS.
- NOTES, GENERAL, UNLESS OTHERWISE SPECIFIED AND AS APPLICABLE:

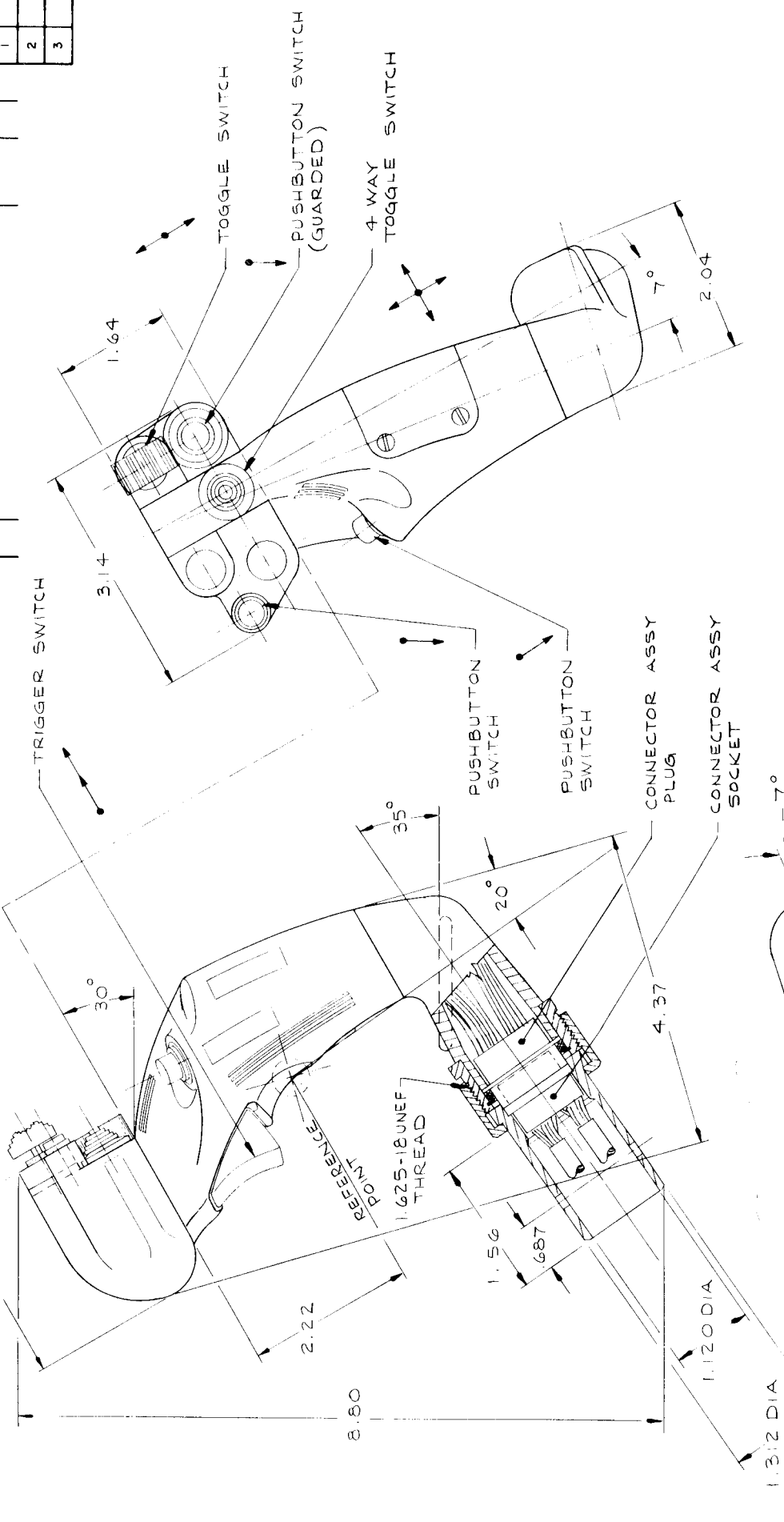
FIND NO	QTY REQD	CODE IDENT NO	PART OR IDENTIFYING NUMBER	NOMENCLATURE OR DESCRIPTION	NOTE
MATERIALS OR PARTS LIST					
UNLESS OTHERWISE SPECIFIED DIMENSIONS ARE IN INCHES					
DECIMALS TOLERANCES					
.XX ± 0.1					
.XXX ± .005					
.XXX ± .005 ± 1'					
HEAT TREAT FINISH					
SYMBOLS					
NOTES					
PARTS LIST					
FIND NO					
PREPARED					
CHECKED					
APPROVED					
SIZE CODE IDENT NO					
C 81579					
SCALE / WT					
SHEET					



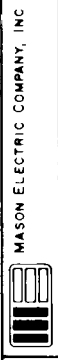
MASON ELECTRIC COMPANY, INC

GRIP ASSEMBLY,
CONTROL

REV STATUS		REV OF SHEETS	
SYN	DESCRIPTION	DATE	APPROVED
SH	REV		
	1		
	2		
	3		



FIND NO	QTY	CODE	IDENTIFYING NUMBER	PART OR IDENTIFYING NUMBER	NOMENCLATURE OR DESCRIPTION	NOTE
					MATERIALS OR PARTS LIST	
UNLESS OTHERWISE SPECIFIED DIMENSIONS ARE IN INCHES						
TOLERANCES						
DECIMALS ANGLES SURF FINISH						
XX ± 0.1 ± 1°						
XXX ± 0.05						
HEAT TREAT FINISH						
SYMBOLS						
FIND NO						
NOTES						
PREPARED						
CHECKED						
APPROVED						
SIZE CODE IDENT NO						
C 81579						
SCALE / WT						
SHEET						



GRIP ASSEMBLY,
CONTROL

MATERIAL: MOLDED FIBER FILLED THERMOPLASTIC WITH CORROSION RESISTANT STEEL ADAPTER AND METAL THREADED COUPLING NUT AND METAL MOUNTING TUBE.

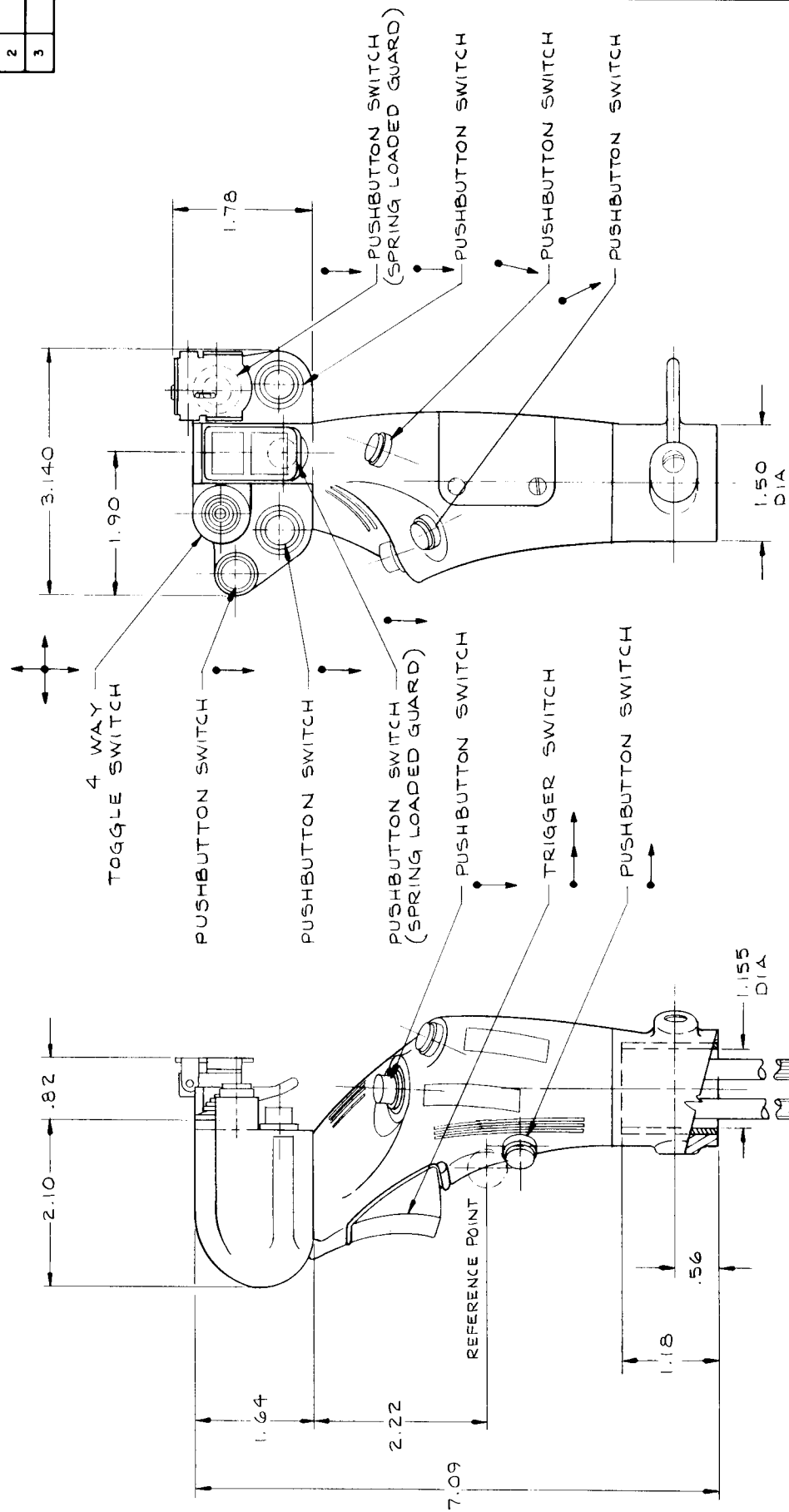
2. DIMENSIONS APPLY AFTER PLATING.

1. REMOVE ALL BURRS AND SHARP EDGES, SPRUE AND ALL FLASH; GATES, FINS AND RISERS.

NOTES, GENERAL, UNLESS OTHERWISE SPECIFIED AND AS APPLICABLE.

REV STATUS		REV OF SHEETS	
SH	REV	SH	REV
1		1	
2		2	
3		3	

REVISIONS		DATE	APPROVED
SYM	DESCRIPTION		



FIND NO	QTY REQD	CODE IDENT NO	PART OR IDENTIFYING NUMBER	NOMENCLATURE OR DESCRIPTION	NOTE
MATERIALS OR PARTS LIST					
UNLESS OTHERWISE SPECIFIED DIMENSIONS ARE IN INCHES					
TOLERANCES					
DECIMALS ANGLES SURF FNISH					
XX ±.01 ±" ✓					
XXX ±.005					
HEAT TREAT FINISH					
SYMBOLS					
PARTS LIST					
FIND NO					
PREPARED					
CHECKED					
APPROVED					
SIZE CODE IDENT NO					
C 81579					
SCALE / WT					
SHEET					

MASON ELECTRIC COMPANY, INC

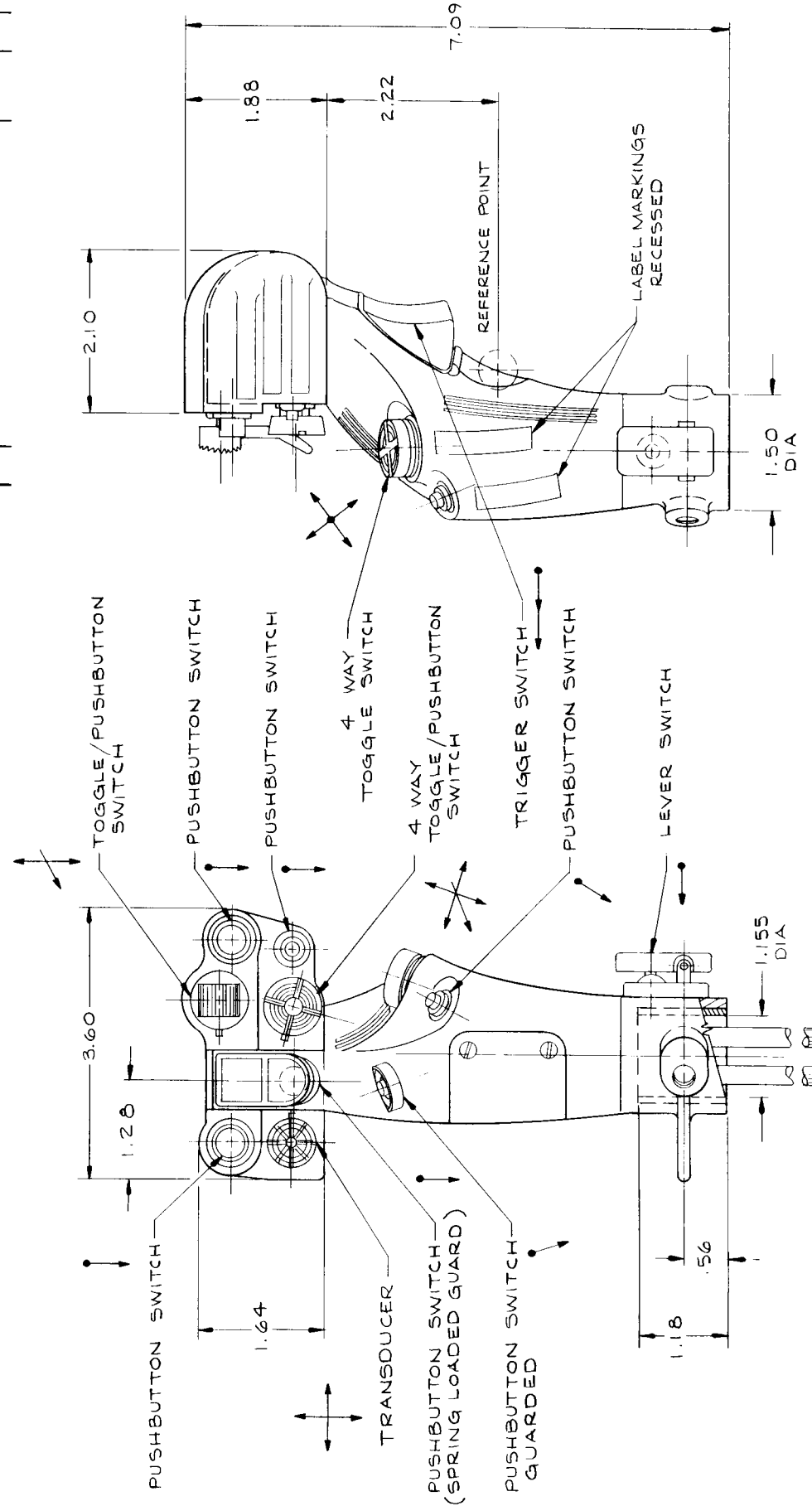
GRIP ASSEMBLY,
CONTROL

MATERIAL: MOLDED FIBER FILLED THERMOPLASTIC WITH METAL INSERT.

2. DIMENSIONS APPLY AFTER PLATING.
 1. REMOVE ALL BURRS AND SHARP EDGES; SPRUE AND ALL FLASH; GATES, FINS AND RISERS.
- NOTES, GENERAL, UNLESS OTHERWISE SPECIFIED AND AS APPLICABLE:

REV STATUS OF SHEETS	
SH	REV
1	
2	
3	

SYN	DESCRIPTION	DATE	APPROVED



FIND NO.	QTY	CODE	PART OR IDENTIFYING NUMBER	NOMENCLATURE OR DESCRIPTION	NOTE
MATERIALS OR PARTS LIST					
UNLESS OTHERWISE SPECIFIED DIMENSIONS ARE IN INCHES					
TOLERANCES					
DECIMALS	XX ±.01	ANGLES	SURF FINISH		
XXX ±.005	±1°				
HEAT TREAT		FINISH			
SYMBOLS					
NOTES					
MASON ELECTRIC COMPANY, INC					
GRIP ASSEMBLY, CONTROL, LEFT-HAND					
SIZE CODE IDENT NO					
C 81579					
SCALE / WT					
SHEET					

MATERIAL: MOLDED FIBER FILLED THERMOPLASTIC WITH METAL INSERT.

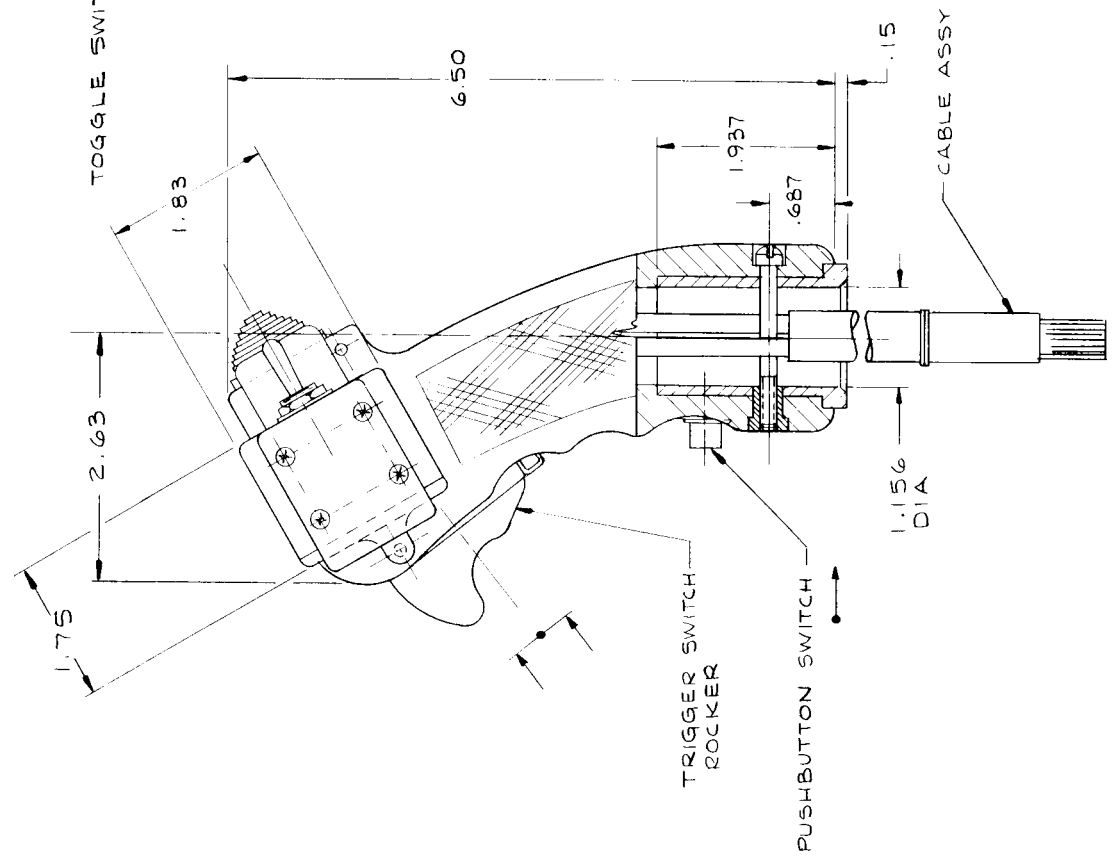
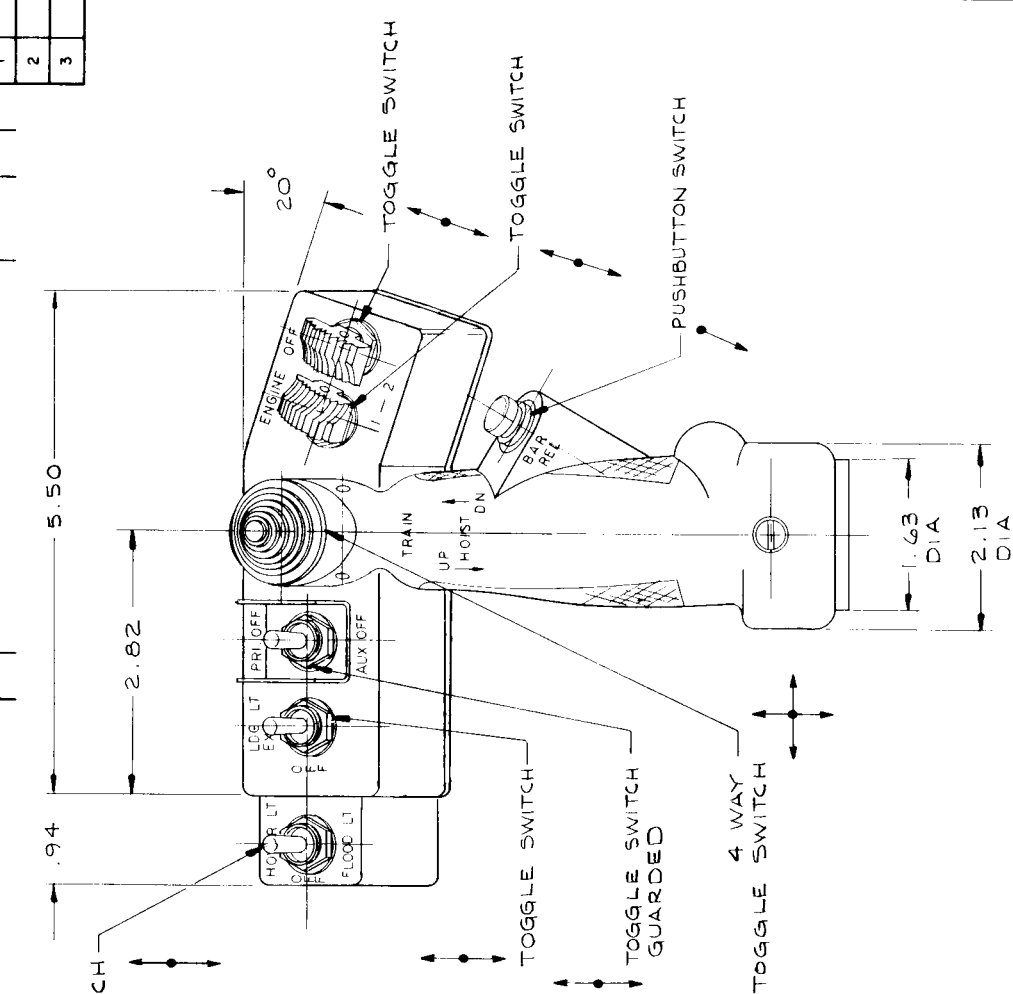
2. DIMENSIONS APPLY AFTER PLATING.

1. REMOVE ALL BURRS AND SHARP EDGES; SPRUE AND ALL FLASH; GATES, FINS AND RISERS.

NOTES, GENERAL, UNLESS OTHERWISE SPECIFIED AND AS APPLICABLE:

REV STATUS OF SHEETS	
SH	REV
1	
2	
3	

REVISIONS		DATE	APPROVED
SYM	DESCRIPTION		



FIND NO	QTY	CODE	IDENTIFYING NUMBER	PART OR IDENTIFYING NUMBER	NOMENCLATURE OR DESCRIPTION	NOTE

MATERIALS OR PARTS LIST	

UNLESS OTHERWISE SPECIFIED DIMENSIONS ARE IN INCHES	PREPARED
TOLERANCES	CHECKED
DECIMALS	APPROVED
ANGLES	
SURF FINISH	
XX ± .01	
XXX ± .005	
HEAT TREAT	
FINISH	

SYMBOLS	
PARTS LIST	
FIND NO	

SIZE	CODE IDENT NO
C 81579	

SCALE	WT	SHEET

MASON ELECTRIC COMPANY, INC

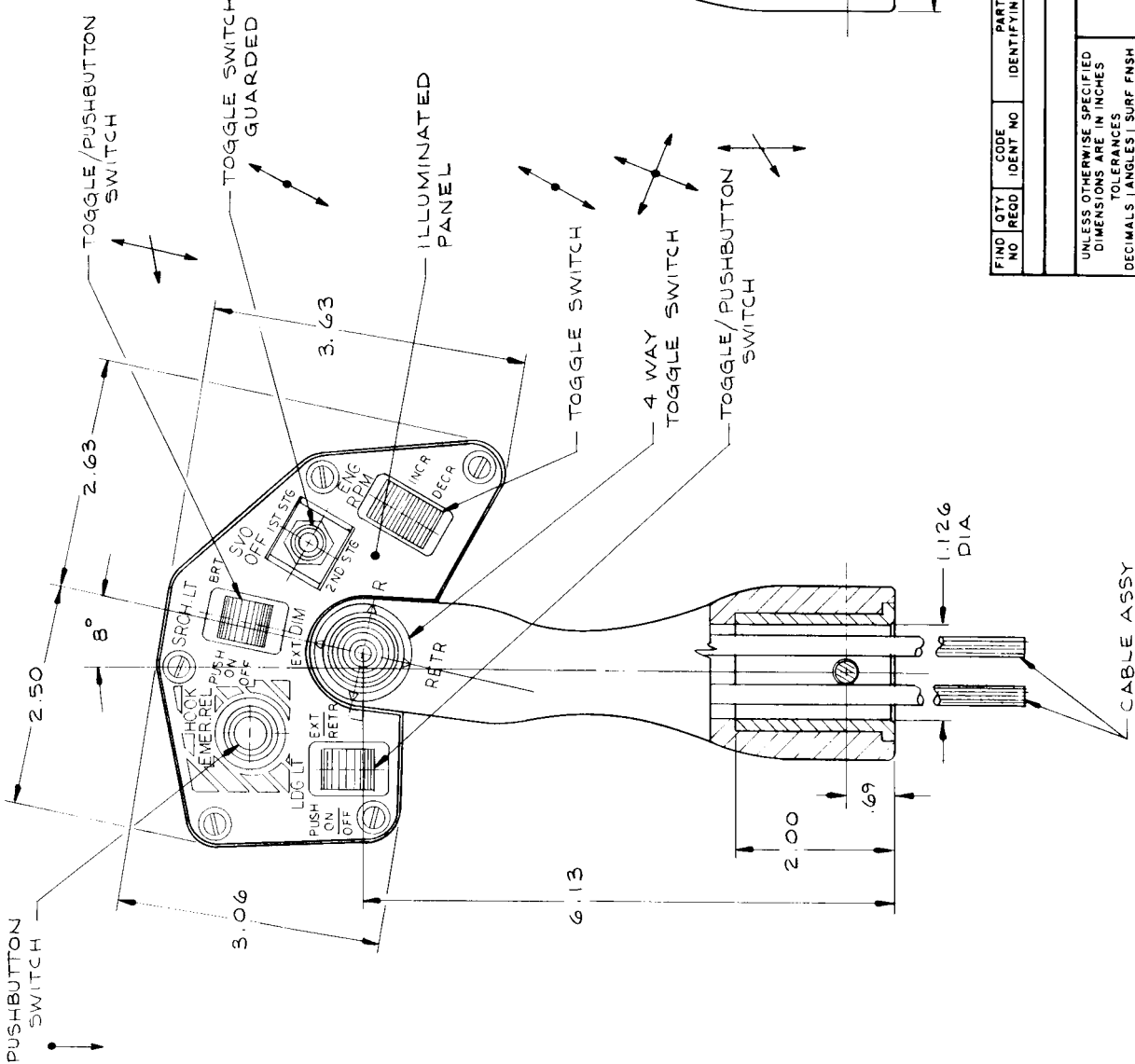
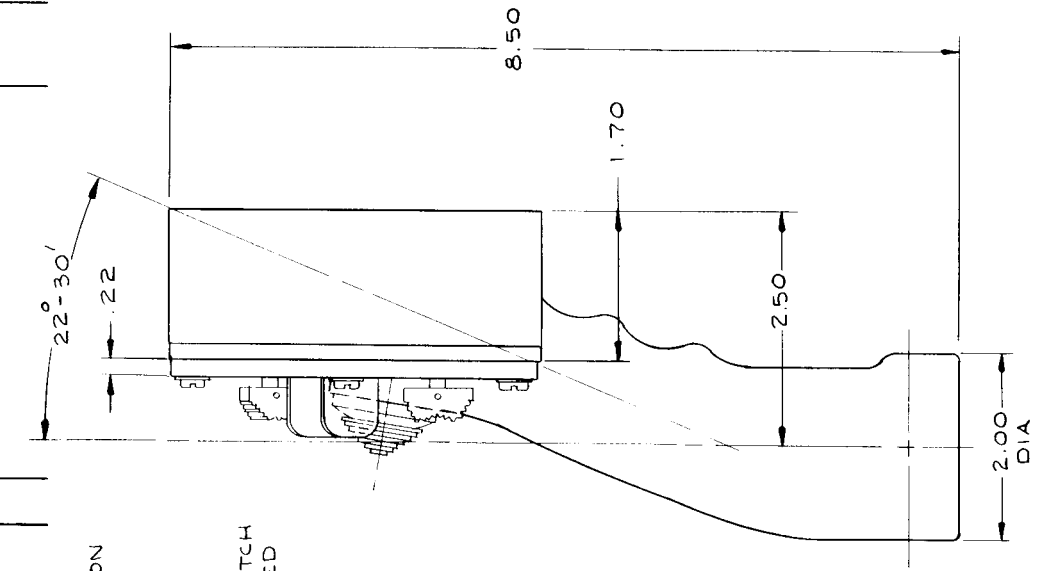
GRIP ASSEMBLY, COLLECTIVE

MATERIAL : MOLDED FIBER FILLED THERMOPLASTIC WITH METAL INSERT

2. DIMENSIONS APPLY AFTER PLATING.
1. REMOVE ALL BURRS AND SHARP EDGES; SPRUE AND ALL FLASH; GATES, FINS AND RISERS.
- NOTES, GENERAL, UNLESS OTHERWISE SPECIFIED AND AS APPLICABLE:

REV STATUS OF SHEETS	
SH	REV
1	
2	
3	

SYN	DESCRIPTION	DATE	APPROVED



FIND NO	QTY	CODE	PART OR IDENTIFYING NUMBER	NOMENCLATURE OR DESCRIPTION	NOTE

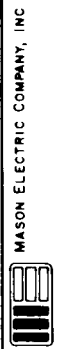
UNLESS OTHERWISE SPECIFIED DIMENSIONS ARE IN INCHES	
DECIMALS	ANGLES SURF FINISH
XX ± .01	± 1°
XXX ± .005	✓
HEAT TREAT	FINISH

SYMBOLS	PARTS LIST
△ NOTES	□ FIND NO

PREPARED	
CHECKED	
APPROVED	

SIZE	CODE IDENT NO
C	81579

SCALE	WT	SHEET



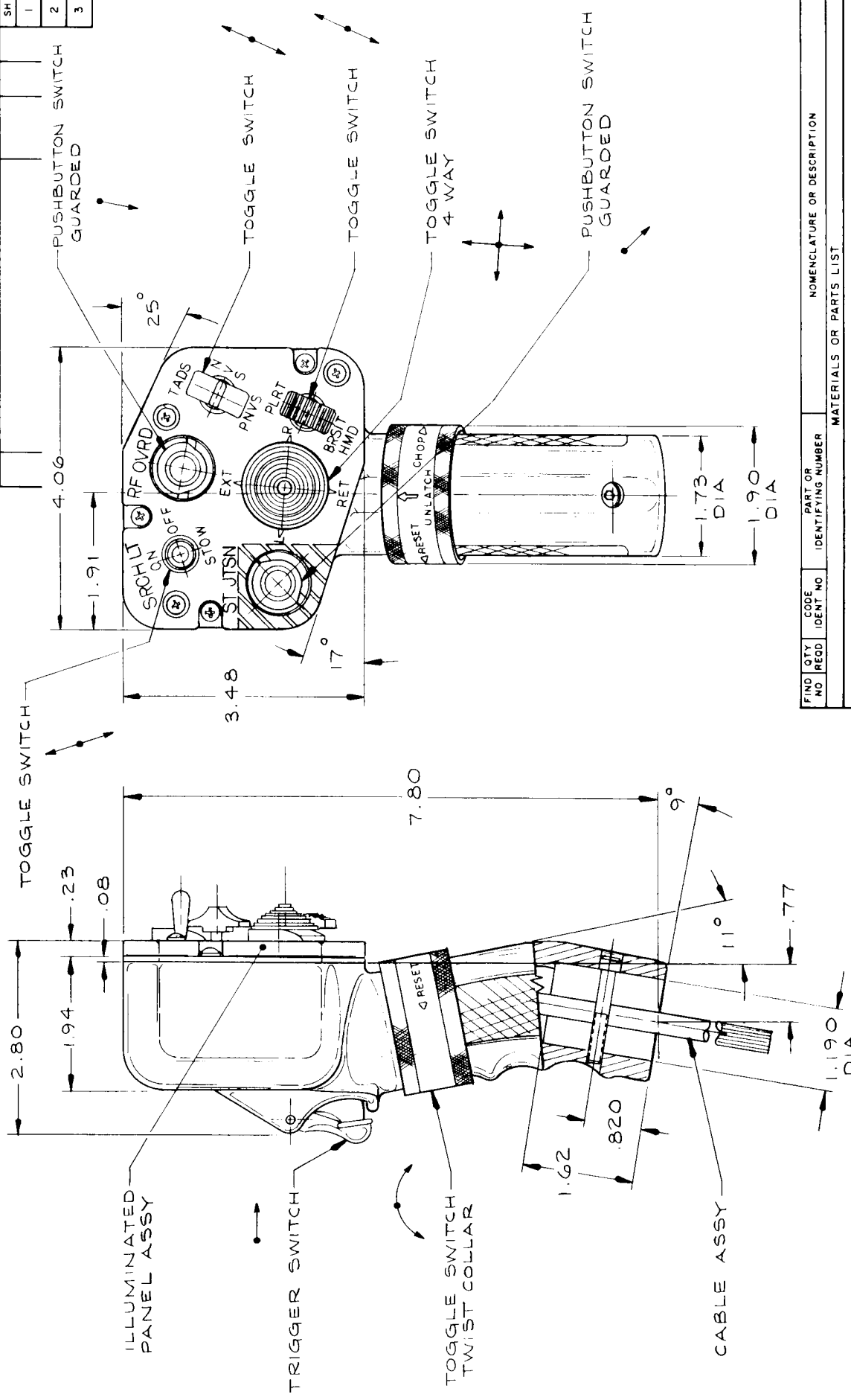
MASON ELECTRIC COMPANY, INC
GRIP ASSEMBLY,
COLLECTIVE

MATERIAL: MOLDED FIBER FILLED THERMOPLASTIC WITH METAL INSERT.

2. DIMENSIONS APPLY AFTER PLATING.
 1. REMOVE ALL BURRS AND SHARP EDGES; SPRUE AND ALL FLASH; GATES, FINS AND RISERS.
- NOTES, GENERAL, UNLESS OTHERWISE SPECIFIED AND AS APPLICABLE:

REV STATUS OF SHEETS	
SH	REV
1	
2	
3	

REVISIONS		DATE	APPROVED
SYM	DESCRIPTION		
	PUSHBUTTON SWITCH GUARDED		



FIND NO.	QTY	CODE	PART OR IDENTIFYING NUMBER	NOMENCLATURE OR DESCRIPTION	NOTE
				MATERIALS OR PARTS LIST	

UNLESS OTHERWISE SPECIFIED DIMENSIONS ARE IN INCHES	
DECIMALS	TOLERANCES
XX ± 0.1	ANGLES SURF FNISH ± 1°
XXX ± 0.005	
HEAT TREAT	FINISH
	✓

PREPARED	
CHECKED	
APPROVED	

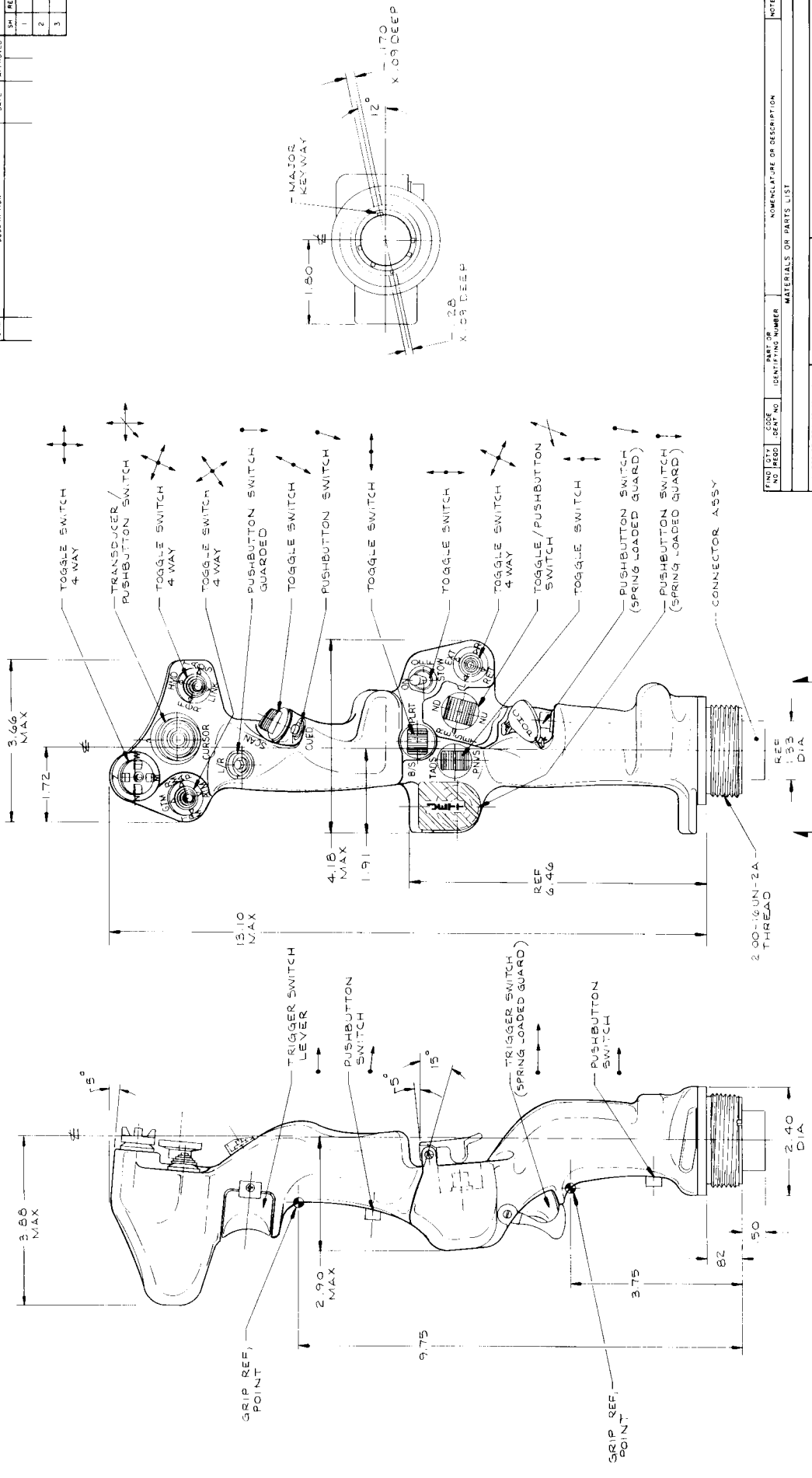
SYMBOLS	PARTS LIST
△ NOTES	□ FIND NO

MASON ELECTRIC COMPANY, INC	
SIZE CODE IDENT NO	C 81579
SCALE	WT
	SHEET

MATERIAL : MOLDED FIBER FILLED THERMOSETTING PLASTIC.

2. DIMENSIONS APPLY AFTER PLATING.
 1. REMOVE ALL BURRS AND SHARP EDGES; SPRUE AND ALL FLASH; GATES, FINS AND RISERS.
- NOTES, GENERAL, UNLESS OTHERWISE SPECIFIED AND AS APPLICABLE:

REV STATUS	SYN	DESCRIPTION	DATE	APPROVED	BY	REV
						1
						2
						3



UNLESS OTHERWISE SPECIFIED DIMENSIONS ARE IN INCHES (DECIMALS / ANGLES) SURF FINISH XXX 2.0 31° RYZZ 000 21°

HEAT TREAT FINISH SYMBOLS: \square CRYSTAL LIST \square PINE NO

NOTES: \triangle APPROVED

SIZE CODE IDENT NO: **D 81579**

SCALE: / IN.

SHEET: /

WASHER ELECTRIC COMPANY, INC

GRIP ASSEMBLY CONTROL COLLECTIVE

PREPARED: _____

CHECKED: _____

APPROVED: _____

FIG. NO. / CODE NO. / IDENT. NO. / IDENTIFYING NUMBER / NOMENCLATURE OR DESCRIPTION / NOTE

MATERIAL: T6 ALUMINUM INVESTMENT CASTING WITH CORROSION RESISTANT STEEL THREADED ADAPTER.

NOTES: SPECIFIC

2 DIMENSIONS APPLY AFTER PLATING

1 REMOVE ALL BURRS AND SHARP EDGES; SPRUE AND ALL FLASH; GATES, FINS AND RISERS

NOTES: GENERAL, UNLESS OTHERWISE SPECIFIED AND AS APPLICABLE