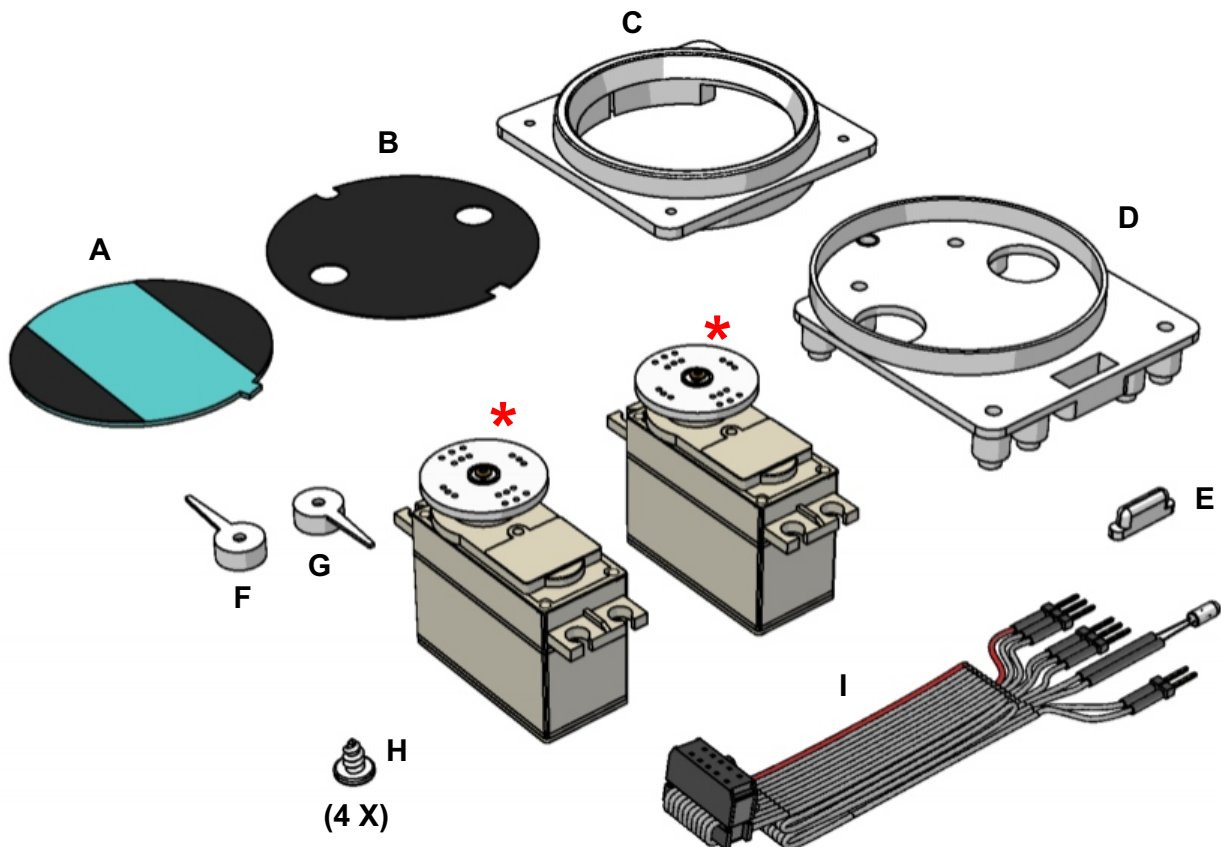


This manual is intended for the assembly of one Fuel Left/Right indicator, EGT/Fuel Flow indicator, Oil Temp/Pressure indicator or Suction Gauge/AM indicator



**\*SERVOS are not included with this kit.**

#### Construction kit "Small Gauge"

Your kit contains all the necessary components (except for servomotors) for building a "Small Gauge".

#### Fine-tuning

The calibration software allows you to accurately adjust the instrument (once connected to the Central Control Unit) to the movement of the indicator of the chosen instrument. Be careful when doing this! The indicator can easily bend out of shape against the side of the instrument.

#### Difficulty level

This product can be constructed without technical expertise. Care and accuracy are of utmost importance.

#### What else do you need?

Two servomotors, types HS300, HS311 or equivalent, are required to make the instrument fully functional. These products

can be ordered separately through the SimKits webshop or bought from any retailer of model kits. Additionally you will need some simple tools, such as a small star-shaped screwdriver, a hobby knife, insulating adhesive tape and glue suitable for plastic model kits.

#### General hints

Be very careful when using the hobby knife! You can easily hurt yourself when handling sharp objects! Take good care of the amount of glue you apply and to which areas you apply it. Glue for plastics is essentially a solvent. Excessive use can damage the exterior of the instrument.

#### Preparations before beginning construction

Check if all components are included. During packing, the contents of the construction kit have been inspected several times. Nothing should be missing.

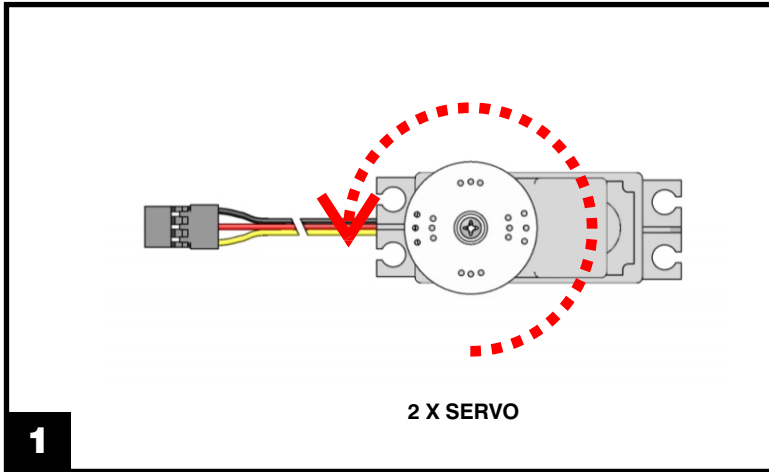
Use the hobby knife to remove any irregularities. Be careful when using the sharp hobby knife!

#### Warranty

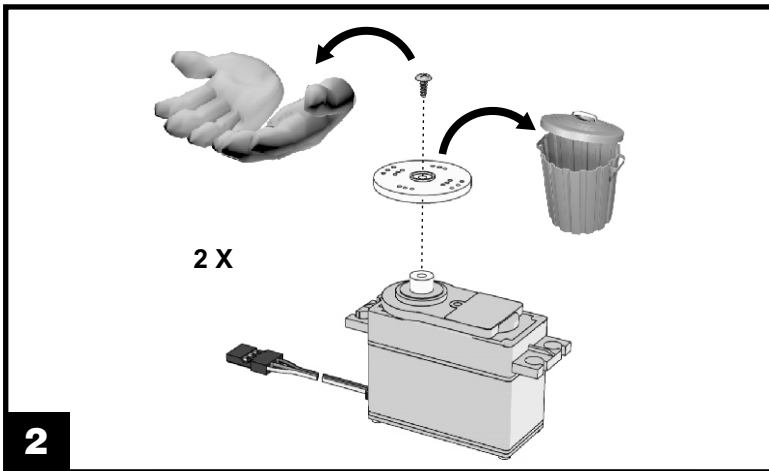
Construction kits come without a warranty!

#### List of components

- A - Printed optical
- B - Printed faceplate
- C - Front ring
- D - Plate
- E - Strain relief
- F - Hand
- G - Hand
- H - Screws (4 x)
- I - Flatcable with connectors and light

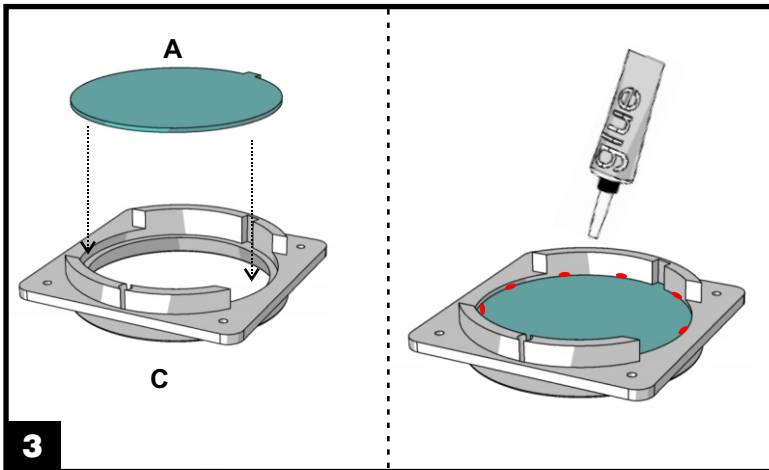


1. Twist the disc on each servo counter-clockwise until it blocks.

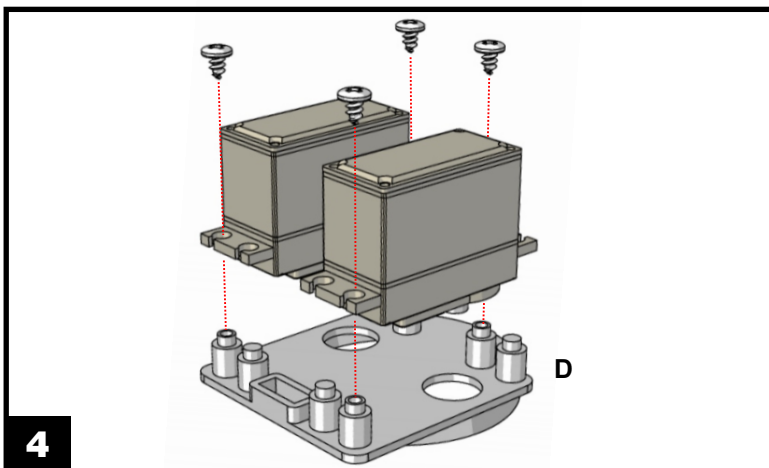


2. Remove the discs from both servos and save the screws. Make sure the servo shaft remains in position!

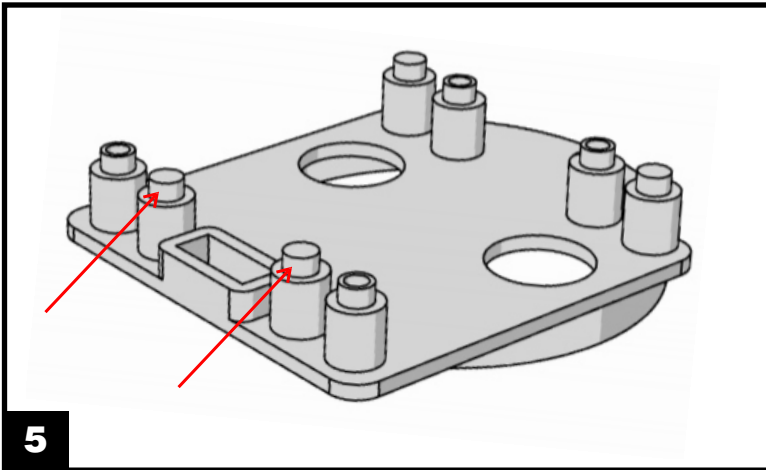
3. PI



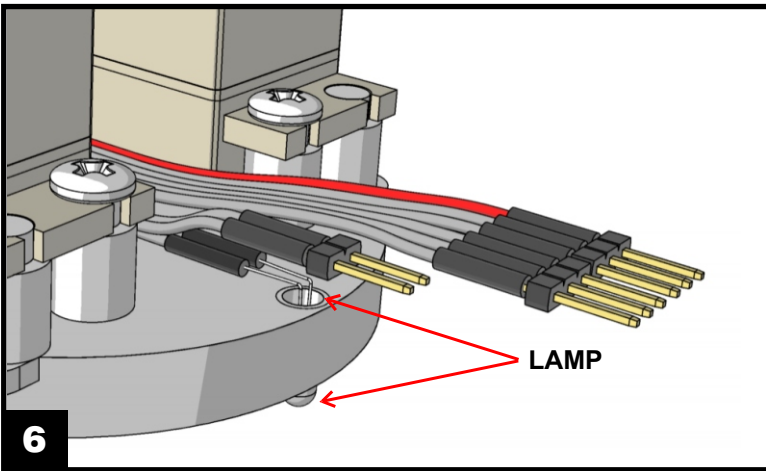
Place the optical inside the front ring (mind the positioning notch) and only then carefully apply several small drops of glue on the inside. Too much glue will be noticeable from the outside, too little will result in the optical being fitted too loosely.



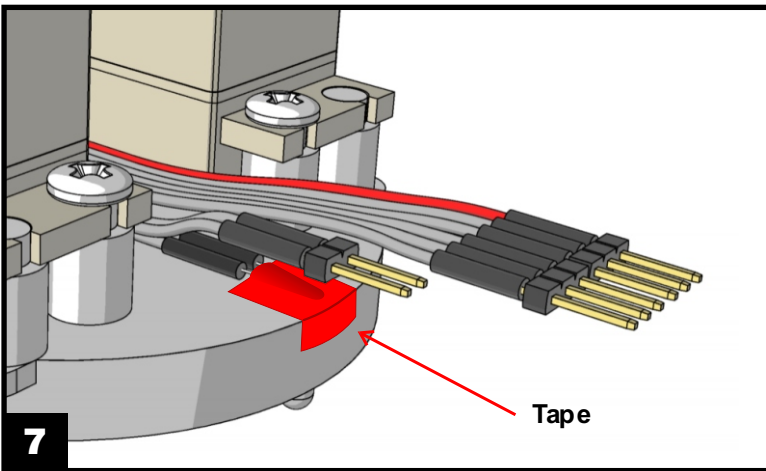
4. Now mount the servos onto the plate as indicated (see also drawing 5).



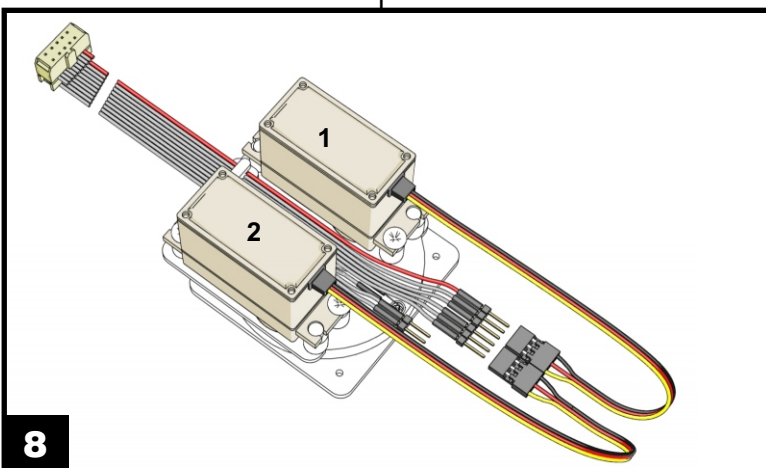
5. If the pins should not fit precisely into the holes of the servo, use a knife to cut them down to a proper length (see illustration). Be careful, it's easy to hurt yourself!!



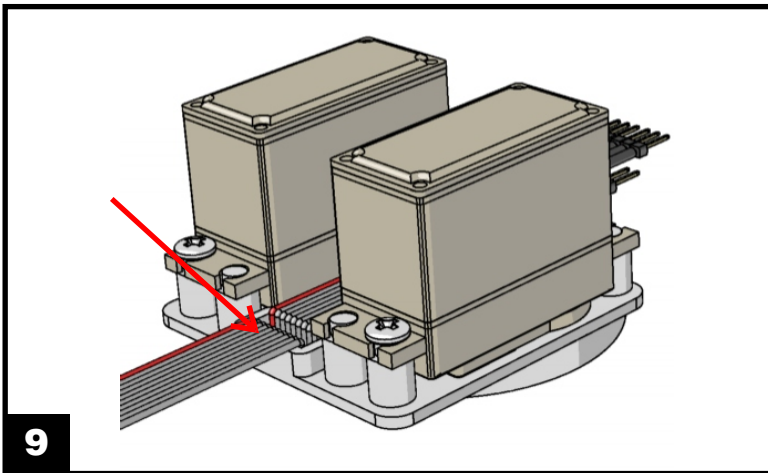
6. Take the flatcable and guide it between the servos in such a way that the light is positioned at the hole in which it will be placed. Fix the light in such a way that it only just protrudes through the hole in the plate, as indicated in illustration 6.



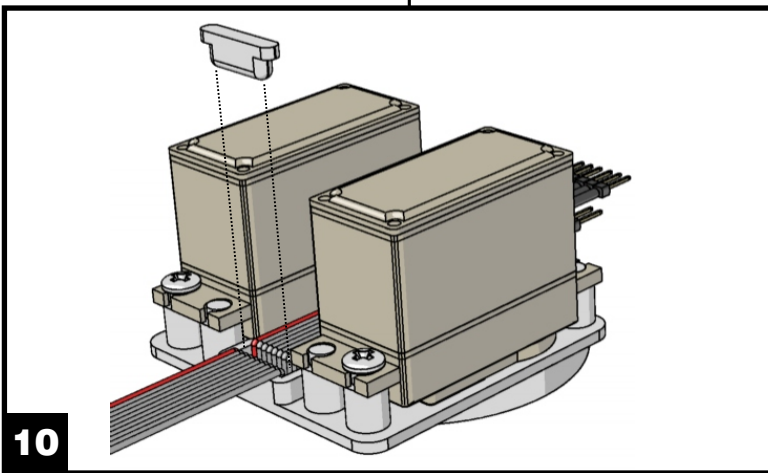
7. Use a piece of adhesive tape to fix the light to the plate and to keep it in position.



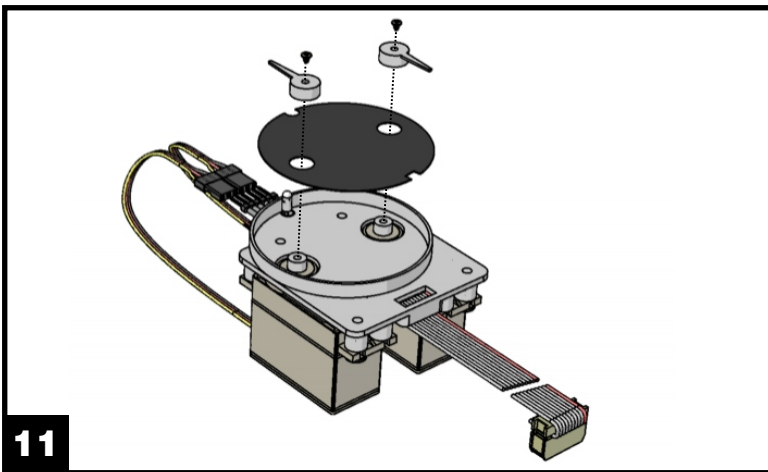
8. Now connect the servos' connectors as indicated in the drawing. Servo 1 is to be connected first, followed by servo 2. Mind the polarities! The 2-pin connector is not used.



9. The plate contains an oblong cavity. This is intended for connecting the flatcable to the strain relief.

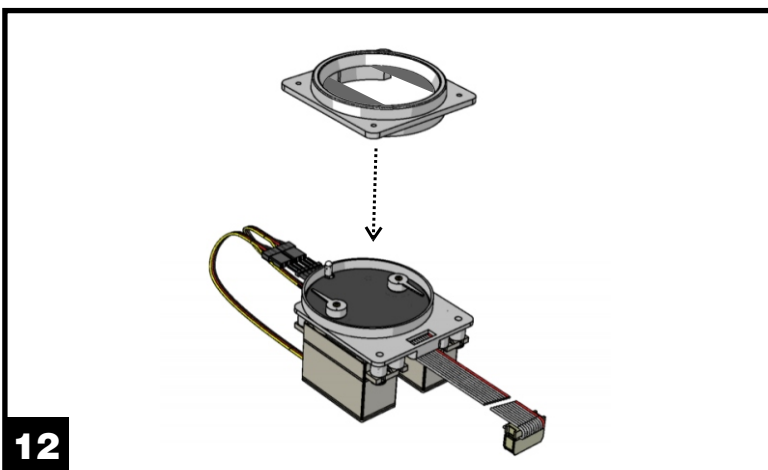


10. Press the strain relief and the slightly folded flatcable into the oblong cavity. Apply some glue to the places where the strain relief touches the plate.



11. Mount the indicators in the position indicated in the drawing, using the screw you previously removed from the servo. Make sure the servo shafts don't twist out of position when doing this.

First test the instrument by connecting it to the Central Control Unit and using the calibration software. Make sure the indicators are not pressed too tightly against the side of the plate. This can bend the indicators out of shape!



12. Once the instrument functions properly you can glue the front ring with optical to the plate.

**SimKits is a trademark of TRC Development b.v. US and European Patents Pending**

SimKit products may only be used for personal entertainment and may not be resold or used to create Flight Simulators, PC ATD's or PCFTD's for resale as complete products. You must agree with the SimKits General Conditions before opening the plastic bags with parts. Opening the plastic bags means that you agree fully with the SimKit General Conditions. If you do not agree, you are entitled to send back the unopened kit for a full refund. No warranty applies to kits.

Support for SimKits can be found at:

[www.simkits.com](http://www.simkits.com)

Copyright TRC Development b.v. - 2003. No part of this document may be copied, in whatever form.

The names Bell, Jet Ranger, Cessna, Skylane, Beechcraft, Baron, Caravan, Grand Caravan, Extra, Mooney, Bravo, Sopwith, Camel, Schweizer, Vaught, Corsai and Microsoft are trademarks of their respective owners.